

These submitted for obtaining academic degrees are important sources of primary research information but are not usually published and are frequently difficult to find. The INIDEP (National Institute of Fisheries Research and Development) Library has always had within its mission the collection, preservation, and provision of access to National marine scientific literature - including Argentine marine theses - even though INIDEP is not a university-academic type institution but a government research one. There are no other institutions in the country providing, within web databases or repositories, their own marine and aquatic theses archives.

The INIDEP Library has an important Marine Theses Archive built up of 350 Argentine documents, which is made available to the world scientific community through the bibliographic databases of SIDALC-ICIA, and also through ASFA-Proquest. INIDEP has been involved, from the beginning in 2005, with the OceanDocs-IOC Repository. The Library has created a Marine Theses Collection -- *Tesis en Ciencias Marinas* -- within the Argentine Community which currently and so far includes 60 records (<http://idodevlib.vliz.be/odn/handle/1834/1339>).

Because the systems interoperability allows many access points, bibliographic databases such as ASFA-Proquest and SIDALC can be linked to Oceansdocs full-text records from this Marine Theses Collection. Scientists can also include the links in their bibliographies and academic Cvs.

At the national level, the INIDEP Library is leading the initiative to start uploading additional theses archives into this Collection by contacting other universities and research institutions and inviting them to train with INIDEP.

The present work shows the usage statistics from different countries and a subject analysis from the Argentine-Marine Thesis Collection through OceanDocs repository.



The "Stat Module" of OceanDocs Repository started functioning during June 2008, therefore this study refers since then till August 2009, as totals are shown in Figure 2. It is observed that there are very few Views compared to Downloads, probably due to searches performed directly from Google and thus opening directly into the PDF without viewing the OceanDocs reference.

By Countries: it is observed that major users are from Latin American countries and the United States (Figure 3: Downloads, Figure 4: Views)

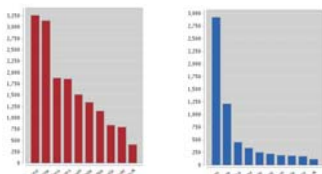


Figure 2. Views compared to Downloads

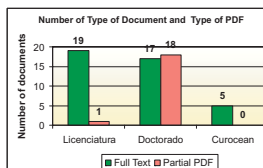
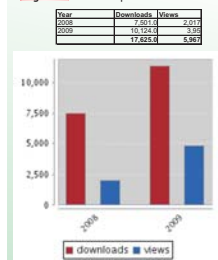
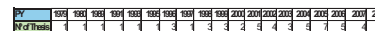


Figure 1. Documents included at the Collection

**Table 1.** Number of documents by Publication Year

The document Subjects were analyzed in 2 ways:

By Descriptors: the connections among them and the contribution of each one in the 60 documents uploaded are shown (Figure 5). From the 142 descriptors, it is observed that most documents relate to trophic relationships, fish eggs and fish larvae

By Subject Categories: the Categories used at INIDEP Library are based on the ASFIS Subject Categories (ASFIS-2 rev.2, 1995). Only for this study, one or two were allocated for each document but not included in the OceanDocs Repository metadata. The number of documents uploaded distributed by Categories are shown in Figure 6. The major subjects studied correspond to ICHTHOLOGY and ECOLOGY-FISH.

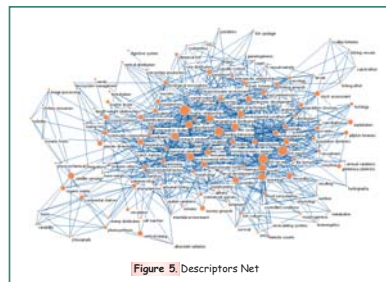


Figure 5. Descriptors Ne

From analyzing both tools combined (Figure 7) we can read that: The Category ECOLOGY-FISH with 16 documents uploaded obtained the major percentage with more than 5000 downloads. But ICHTHOLOGY, with the same amount of documents, only has 3466 downloads. An unpredictable result was the Category FISHERIES PRODUCTS TECHNOLOGY, with only 1 document uploaded and 2695 downloads. In contrast MALACOLGY or CARCINOLOGY, with also 1 document each, had very few downloads. We can infer that this Repository is not only used by scientists but also by technical and non-academic users.

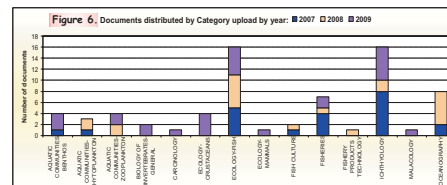


Figure 6. Documents distributed by Category upload by year: ■ 2007 ■ 2008 ■ 2009

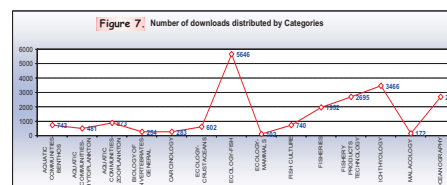


Figure 7. Number of downloads distributed by Categories

This introductory analysis shows a bias because most of the Theses uploaded are from INIDEP Library and from INIDEP scientists or related research projects. As progress from this study, in the near future -60 partial PDFs are ready to be uploaded; -University librarians from Patagonian provinces were contacted to start selecting and processing their marine Theses; -another indicators could be analyzed.

The impact within the young Argentine scientific community of web alert notices about this collection is high. Many new PhDs request the INIDEP Library to incorporate their just-released born-digital thesis into the Repository.

[illegible]

View by country			
Country	Value	Value	Price (%)
Argentina	1,155	19	1.7
Australia	2,225	20	0.9
Belgium	281	2	0.7
Canada	281	2	0.7
China	2,225	20	0.9
Colombia	211	3	1.4
Costa Rica	186	2	1.1
Czechia	186	2	1.1
Denmark	186	2	1.1
Egypt	426	1	0.2
France	281	2	0.7
Germany	281	2	0.7
Greece	281	2	0.7
India	186	2	1.1
Indonesia	186	2	1.1
Italy	186	2	1.1
Japan	186	2	1.1
Kenya	186	2	1.1
Malaysia	186	2	1.1
Mexico	186	2	1.1
Netherlands	186	2	1.1
Norway	186	2	1.1
Peru	186	2	1.1
Poland	186	2	1.1
Portugal	186	2	1.1
Romania	186	2	1.1
Russia	186	2	1.1
South Korea	186	2	1.1
Spain	186	2	1.1
Sweden	186	2	1.1
Switzerland	186	2	1.1
Taiwan	186	2	1.1
Thailand	186	2	1.1
Turkey	186	2	1.1
United Kingdom	186	2	1.1
United States	186	2	1.1
Vietnam	186	2	1.1
Yemen	186	2	1.1
Zimbabwe	186	2	1.1
Other	186	2	1.1
Subtotal	186	2	1.1
Total	186	2	1.1