

Data Management Research: an approach according to GDPR

Maria Nunes¹ | Joana Rodrigues² | Carla Teixeira Lopes³

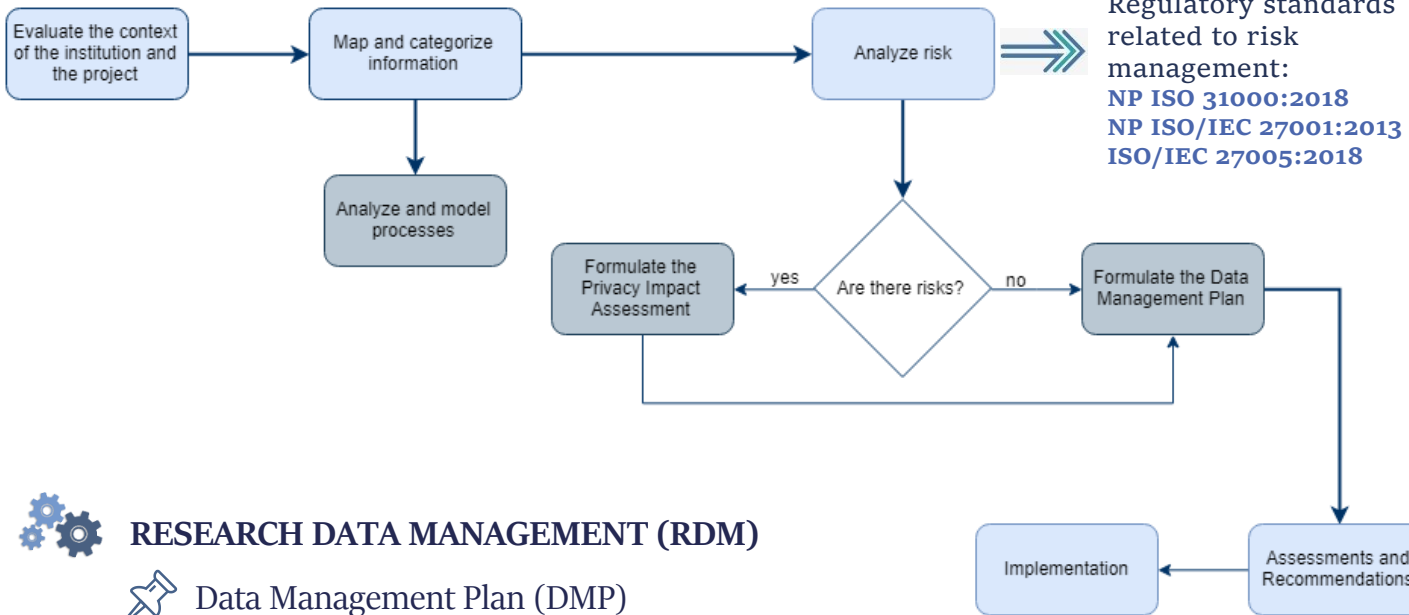
maria.r.mn@hotmail.com¹, joanasousarodrigues.14@gmail.com², ctl@fe.up.pt³

Master Degree in Information Science¹ | Faculty of Engineering University of Porto^{1,3} | INESC TEC^{2,3}

This work was applied to three projects of the Institute for Research and Innovation in Health (i3S):

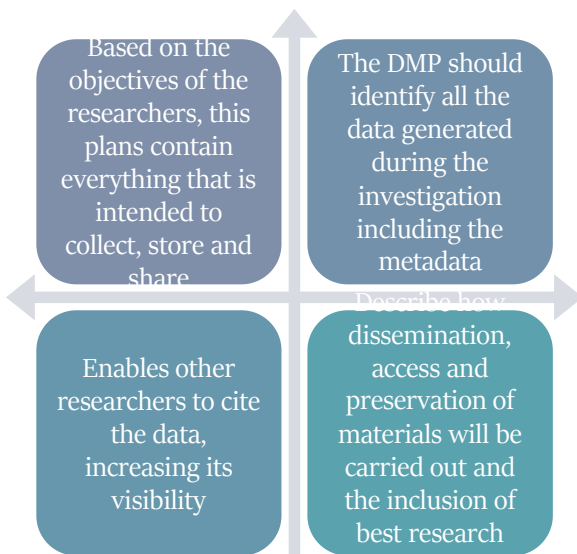


WORKFLOW



RESEARCH DATA MANAGEMENT (RDM)

Data Management Plan (DMP)



GENERAL DATA PROTECTION REGULATION (GDPR)

Privacy Impact Assessment (PIA)

