

Map/GIS Libraries' Collections and Services in Greece: Challenges and Opportunities

Ifigenia Vardakosta, PhD
Head Librarian
Harokopio University of Athens
Library & Information Centre
ifigenia@hua.gr



**HAROKOPIO UNIVERSITY OF ATHENS
LIBRARY AND INFORMATION CENTRE**





Presentation Outline

- Overview of Map/GIS Collections and Collections in Greece
- Challenges for Map/GIS Libraries
- Opportunities for Map/GIS Libraries
- Suggestions

Overview of Map/GIS Collections and Services in Greece (2/11)

Academic Libraries

Library of Agricultural University of Athens

Library of the Aegean University



There are no translations available.



Χάρτες

Η βιβλιοθήκη και Κέντρο Πληροφόρησης του Ιδρύματος διαθέτει στη συλλογή της 470 χάρτες σε έντυπη μορφή και ένα σύνολο από χωρικά ψηφιακά δεδομένα που αφορούν διάφορες περιοχές της Ελλάδας.

A. Έντυπη μορφή

Οι χάρτες είναι ταξιθετημένοι στον υπόγειο χώρο της βιβλιοθήκης σε ειδικά τρόλευι και δανείζονται για μικρό χρονικό διάστημα.

Περισσότερα....

B. Ψηφιακή μορφή

Η πρόσβαση στα **ψηφιακά χωρικά δεδομένα** παρέχεται προς όλα τα μέλη της Ακαδημαϊκής Κοινότητας και μόνο από το δίκτυο του Γ.Π.Α. Για την επεξεργασία των χαρτών απαιτείται **ειδικό λογισμικό GIS** (π.χ. ArcGIS, Geomatica κ.α).

Ηλεκτρονική διεύθυνση: <http://spdata.aua.gr>

Περισσότερα....

Με τη συγχρηματοδότηση του Ευρωπαϊκού Κοινωνικού Ταμείου Γ'Κ.Π.Σ. / ΥΠ.Ε.Π.Θ. / Ε.Π.Ε.Α.Ε.Κ. II / 2.1.3.6 MIS 60533.



Q SITE SEARCH

Search in Content

Library Services

Our News

Library Presentation

Contact

↑ » Search in Content » ...in other sources

Digital Map Library

- Static Maps
- Interactive Maps
- Electronic Interactive Atlas of the Aegean

<https://www.lib.aegean.gr/en/menu-search-in-other-sources-digital-map-library>

http://library.aua.gr/index.php?option=com_content&view=article&id=86&Itemid=16&lang=en

QQML 2023
Hellenic Mediterranean University
Heraklion, Crete, Greece
30 May-3 June



Overview of Map/GIS Collections and Services in Greece (3/11)

Municipal Libraries



Our Library ▾ Collections ▾ Catalogues ▾ Events Services ▾ Contact ▾ | 🔍



The KMLK possess a small, although remarkable, collection of maps, simple writings, and atlases, among which the top position is held by the twelve page Map of Riga Velestinlis (1796-1797) already proclaimed a national monument of modern cultural heritage, and a four page world map of Anthimos Gazis (1800). For the organization and display of this collection, the Municipality of Kozani, the Koventarios Municipal Library, and the Aristotle University of Thessaloniki, collaborated for the establishment of a Municipal Map Library at the recently restored Lassani Mansion, a building from the 18th century. The Municipal Map Library of Kozani aspires to become an innovative institution not only for the city, but also for the country with international prestige, supplementing the significant nationwide library, reinforcing the cultural profile of the city, and becoming a new educational attraction around the culture of maps and their educational power. With the appointment, promotion, and utilization of important, but up until now unknown collection of historical maps and atlases, mainly from the Hellenic period of the 18th century, sent to the birthplace of Kozanites who lived mainly in Central Europe, the Map Library offers Kozani a new subject and together with the library they will become a powerful dipole in the field of knowledge and culture. The Map Library is organized with a base of contemporary beliefs and practices for such institutions, giving emphasis to new digital technologies and international cooperation so that it can become an innovative, open, and attractive organization, and a center of cultural, educational, and scientific tourism. In this way, Kozani becomes the first city in Greece which acquires a municipal institution of this type, and pioneered the cultivation and development of the historical deficit of our country's culture of cartography and maps.

[See excerpts from the Treasures of the Library.](#)

[Search our collection.](#)

http://www.kozlib.gr/kozlib_new/?page_id=7481

QQML 2023
Hellenic Mediterranean University
Heraklion, Crete, Greece
30 May-3 June



Overview of Map/GIS Collections and Services in Greece (4/11)

Special Libraries

AMERICAN SCHOOL OF
CLASSICAL STUDIES AT ATHENS

ABOUT US PROGRAMS FELLOWSHIPS RESEARCH FIELDWORK PUBLICATIONS NEWS AND EVENTS ALUMNI

Research

Gennadius Library

About Us

The Collections

Greek Classics

Modern Greek Literature

Byzantine Collection

Theology

Akolouthies

Geography and Travel

Maps of the Mediterranean

Art and Archaeology

Ottoman History

Modern Greek History

Natural History

The Stathatos Room

Manuscripts

Costume albums

Scrapbooks of Joannes Gennadius

Research Resources

Educational Programs

Public Programs

Exhibitions

MAPS OF THE MEDITERRANEAN

Search the map collection of the Gennadius Library

The Gennadius Library is a repository of an outstanding collection of about 3,000 historical maps on Greece, the Balkans and Turkey, an important part of the collection of Joannes Gennadius. Spanning a period from the late fifteenth to the twentieth centuries, these maps are either drawn in hand or were printed by noted cartographers and map publishers. Some highlights include: a series of island maps in the Ionian and Aegean seas from a fifteenth century manuscript of Buondelmonti's *Liber Insularum*, an early nineteenth century chart of the Aegean by Nicolas Kefalas (possibly the first printed Greek nautical chart), and numerous maps concerned with the political development of the Balkan states in the late nineteenth century.

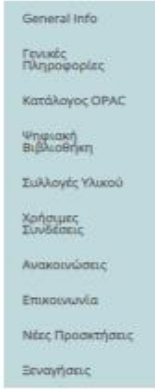
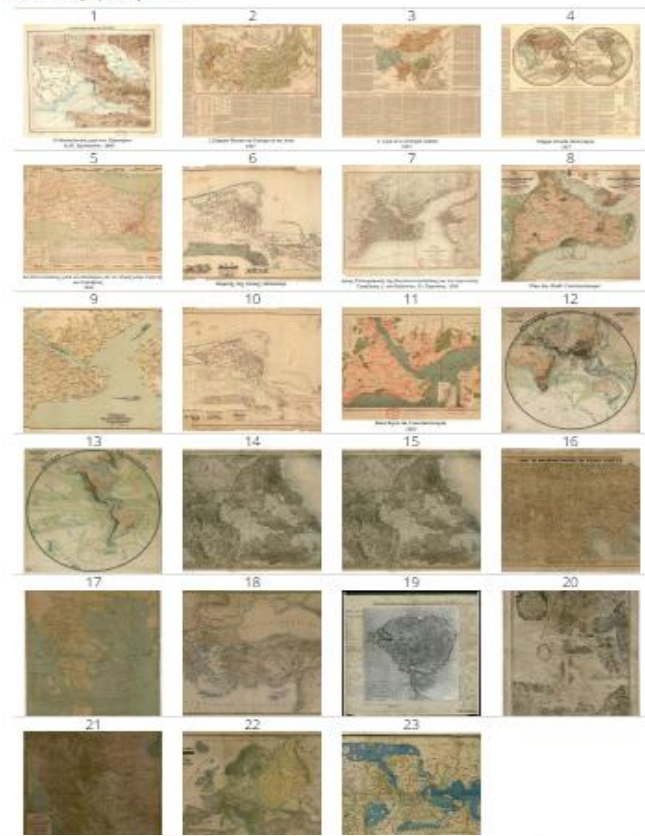
The project **Mapping Mediterranean Lands**, conducted under the aegis of the Council of American Overseas Research Centers, created a fully searchable web-based catalog of significant early and unique maps of the Mediterranean region accompanied by information drawn from archives, manuscripts, and early printed books at eight American overseas research centers.

The valuable cartographic material of the Gennadius Library was catalogued by Leonora Navari and Alexis Malliaris under the wise leadership of Catherine DeG. Vanderpool and Natalia Vogeikoff-Brogan (MedMaps project completed in 2004). Part of the material was photographed by Arthur and Jennifer Stephens, and the rest was digitized in 2011-2014 thanks to the ESPA grant "Digital Access to the Gennadius Library." We are grateful to Panagiotis Valourdos for processing the metadata and to Tarek Elemam for the online presentation.



Αρχική > Συλλογές > Έλασσό > Συλλογή Χαρτών

Συλλογή Χαρτών



<https://www.ascsa.edu.gr/research/gennadius-library/the-collections/mapping-mediterranean-lands>

<http://www.academyofathens.gr/el/library/collections/maps>

QQML 2023
Hellenic Mediterranean University
Heraklion, Crete, Greece
30 May-3 June



Overview of Map/GIS Collections and Services in Greece (5/11)

Private Libraries

TRAVELOGUES
TRAVELLERS' VIEWS
Places – Monuments – People
Southeastern Europe – Eastern Mediterranean
Greece – Asia Minor – Southern Italy

15th - 20th century

AIKATERINI LASKARIDIS FOUNDATION TRAVELOGUES PLACES SOURCES BIBLIOGRAPHY SUBJECTS CONTACT

Highlighted on the map are some major journey stopovers, for which adequate graphic material is available as well. For illustrations on other locations, search through "ALL SUBJECTS", or use "Advanced Search"



K@A AIKATERINI LASKARIDIS FOUNDATION TOPOS TEXT

Home About TT Places Ancient Texts People Tools Contact us

This is a modern GIS map of the Eastern Mediterranean region, showing the same geographical area as the historical map. The map is overlaid with numerous colored circles (yellow, orange, green, blue) and numbers, representing major journey stopovers. The map includes labels for various cities and regions, such as Paris, Rome, Athens, and Constantinople. The map is part of the TOPOS TEXT project, which provides digital access to historical maps and travel guides.

<http://eng.travelogues.gr/topoi.php>

<https://topostext.org/the-places>

QQML 2023
Hellenic Mediterranean University
Heraklion, Crete, Greece
30 May-3 June



Overview of Map Collections and Services in Greece (6/11)

Special Libraries



ΕΛΛΗΝΙΚΟ ΛΟΓΟΤΕΧΝΙΚΟ
ΚΑΙ ΙΣΤΟΡΙΚΟ ΑΡΧΕΙΟ

EN | GR

ΕΛΙΑ ΕΠΙΣΚΕΨΗ ΑΡΧΕΙΑ - ΒΙΒΛΙΟΘΗΚΗ ΕΛΙΑ ΨΗΦΙΟΠΟΙΗΜΕΝΟΣ ΕΡΓΑΛΕΙΑ ΗΜΕΡΟΛΟΓΙΟ ΒΙΒΛΙΟΠΩΛ
- ΕΡΕΥΝΑ ΣΥΛΛΟΓΕΣ - ΘΕΣΣΑΛΟΝΙΚΗΣ ΣΥΛΛΟΓΕΣ ΕΡΕΥΝΑΣ ΣΗΜΕΙΩΜΑΤΑΡΙΟ Ε SHOP

Αρχική > Ψηφιοποιημένες συλλογές > Συλλογή Χαρτών

ΓΕΝΙΚΗ ΑΝΑΖΗΤΗΣΗ

ΑΝΑΖΗΤΗΣΗ ΜΕ ΚΩΔΙΚΟ

ΦΩΤΟΓΡΑΦΙΚΟ ΑΡΧΕΙΟ

ΚΑΡΤ ΠΟΣΤΑΛ

ΨΗΦΙΟΠΟΙΗΜΕΝΟΣ ΤΥΠΟΣ
ΚΑΙ ΗΜΕΡΟΛΟΓΙΑ (FULL
TEXT)

ΤΥΠΟΣ & ΕΦΗΜΕΡΑ

ΤΜΗΜΑ ΠΑΡΑΣΤΑΤΙΚΩΝ
ΤΕΧΝΩΝ

ΣΥΛΛΟΓΗ ΧΑΡΤΩΝ

ΕΚΠΑΙΔΕΥΤΙΚΟ ΠΡΟΓΡΑΜΜΑ
ΑΘΗΝΑ 1834-1934

ΨΗΦΙΑΚΗ ΕΚΔΟΣΗ
ΘΕΣΣΑΛΟΝΙΚΗ 1900-1930

Ε.Π. ΚΟΙΝΩΝΙΑ ΤΗΣ
ΠΑΛΗΡΟΦΟΡΙΑΣ

Συλλογή Χαρτών

Αναζήτηση στη συλλογή χαρτών

Η ψηφιοποιημένη συλλογή χαρτών του ΕΛΙΑ αποτελείται κυρίως από στρατιωτικούς χάρτες της περιόδου 1852-1940 που απεικονίζουν, στην πλειοψηφία τους, τον ελλαδικό χώρο και τα Βαλκάνια. Χάρτες του Αυστριακού Καιοροβασιλικού Ινστιτούτου, Γαλλικών και Βρετανικών χαρτογραφικών αποστολών, της Γεωγραφικής Υπηρεσίας Στρατού αλλά και ελληνικών εκδόσεων αποτυπώνουν την μεταβολή και επέκταση του ελληνικού βασιλείου και δίνουν στοιχεία για την εθνογραφική σύνθεση των ελληνικών και των ομόρων περιοχών. Υπάρχουν επίσης πολεοδομικά διαγράμματα καθώς και χάρτες που αποτυπώνουν το δίκτυα μεταφορών (οδικά, σιδηροδρομικά, ακτοπλοϊκά) και επικοινωνίας (ηλεκτρονικά) και την αγροτική παραγωγή.

Τίτλος:	<input type="text"/>
Σειρά:	<input type="text"/>
Εκδότης:	<input type="text"/>
Δημιουργός (Χαρτογράφος, χαρακτήρ):	<input type="text"/>
Έτος Έκδοσης:	<input type="text"/>
Γεωγραφικό θέμα:	<input type="text"/>
Τυπογραφείο/ λιθογραφείο:	<input type="text"/>
Λέξεις Κλειδιά:	<input type="text"/>

Αναζήτηση

BRITISH
SCHOOL
at
ATHENS

BRITISH SCHOOL at ATHENS
AN INSTITUTE FOR ADVANCED RESEARCH

About Us What We Do Join Us Support Us

General Information

Access

Collections & Resources

Catalogue

New Books

New Journals

External Databases

Library Stories

Related Links

Become a Reader

Library Guide & Plan

Open Resources



The British School at Athens Map Collection includes cartographic records of Greece from the 17th century to the present day. The older and rarer maps were collected by George Finlay. The collection is predominantly based on army reconnaissance starting with the Austrian Staff Maps from the 19th Century, followed by the British Army maps of Greece from the 1st and 2nd World Wars, culminating in the recent Greek Army maps. The collection includes the British Admiralty Charts from the 19th century and subject specific maps such as geology. There are more than 2,000 sheets which have been added to the union catalogue AMBROSIA.

Click here to search and browse the map collection

You can download a finding aid (pdf) for the map collection BSA Map Collection List (1) Final

https://www.bsa.ac.uk/about-us/library/collections_and_resources/maps/

<http://www.elia.org.gr/digitized-collections/maps/>

QQML 2023
Hellenic Mediterranean University
Heraklion, Crete, Greece
30 May-3 June



Overview of Map/GIS Collections and Services in Greece (7/11)

National Documentation Centre

Search Culture.gr

Culture in the digital public space



NATIONAL DOCUMENTATION CENTRE

Search items Browse Interoperability

About For institutions Contact EA-EN

Enter word or phrase

In all fields

More search options

Search Clear Help

Filters

520,204 items

Map Grid

Clear

Subject

Search for subject

Type

Search for type

Place

Search for place

Person

Search for person

creators or related persons

Chronology

Historical period

Institution / collection

Europeana type



Area coordinates: -84.1250,-180.0000 TO 87.3845,180.0000

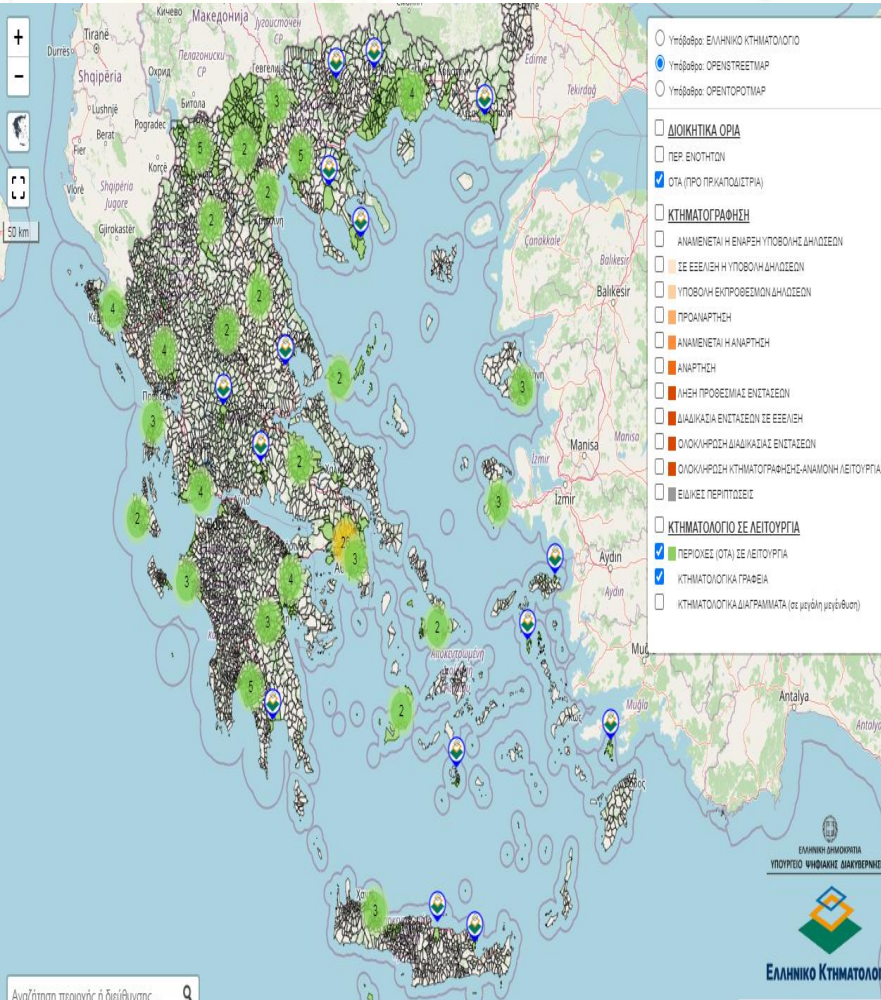
<https://www.searchculture.gr/aggregator/portal/advancedSearch/search?resultsMode=MAP&moreOptions=true&language=en>

QQML 2023
Hellenic Mediterranean University
Heraklion, Crete, Greece
30 May-3 June

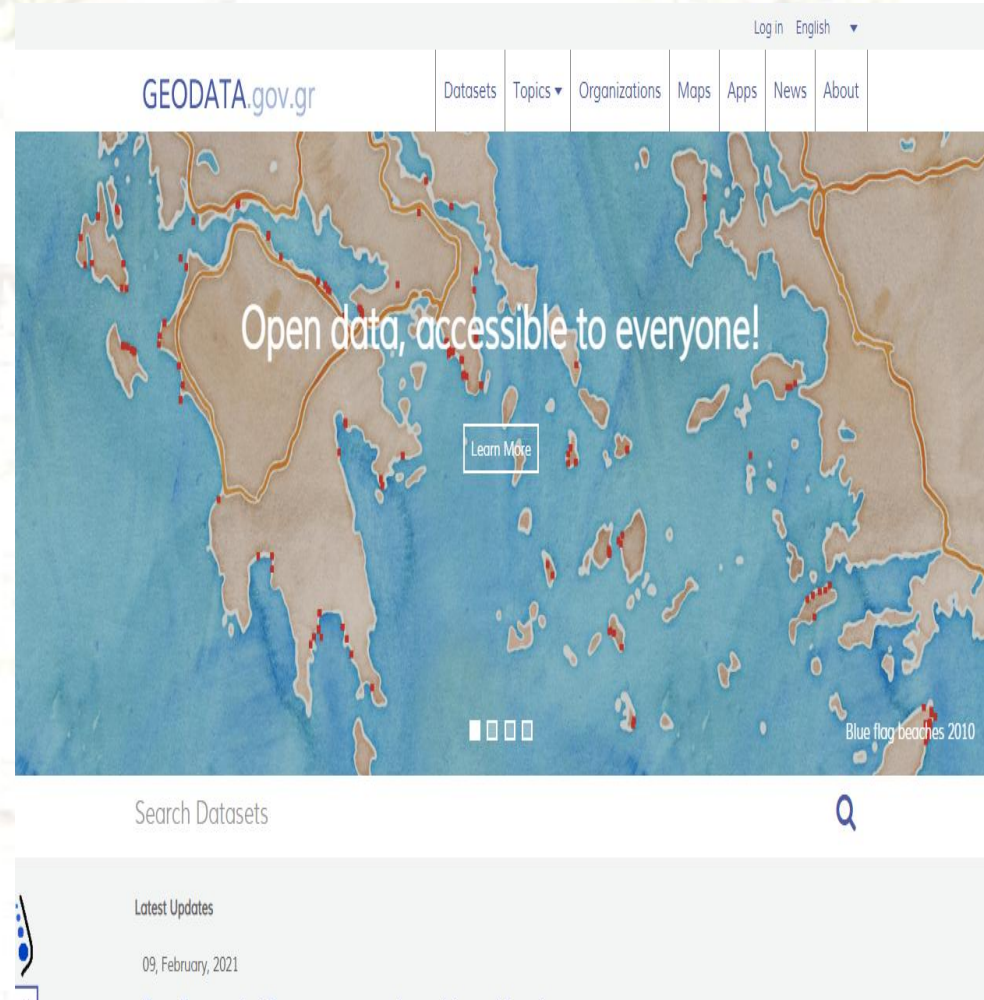


Overview of Map/GIS Collections and Services in Greece (8/11)

National Cadastre



Geodata



<https://www.ktimanet.gr/geoportal/cadastreviewer/index.html>

<http://geodata.gov.gr/en/>

Overview of Map/GIS Collections and Services in Greece (9/11)

Cartographic Heritage Archives

HELLENIC GENERAL STATE ARCHIVES - HISTORICAL ARCHIVES OF MACEDONIA

maplibrary.gr
CARTOGRAPHIC HERITAGE ARCHIVES

37, DEM. POLIORKETOU St.
GR546 33 THESSALONIKI
TEL. +302310 243120 - FAX +302310 243121
info<at>maplibrary.gr | maplibrary<at>sch.gr
www.maplibrary.gr
FB: www.facebook.com/maplibrary



The Cartographic Heritage Archives

- Who are we - Contact us



The Maps

- Collections
- Digital Map Library



Our Activities

- Education • Collaborations
- Exhibitions • Publications

2015 - Pages designed and updated by Cartographic Heritage

<http://www.maplibrary.gr/en.htm>

QQML 2023
Hellenic Mediterranean University
Heraklion, Crete, Greece
30 May-3 June



Overview of Map/GIS Collections and Services in Greece (10/11)

Hellenic Statistical Authority

Mapping Panorama of Greek Census Data 1991-2011

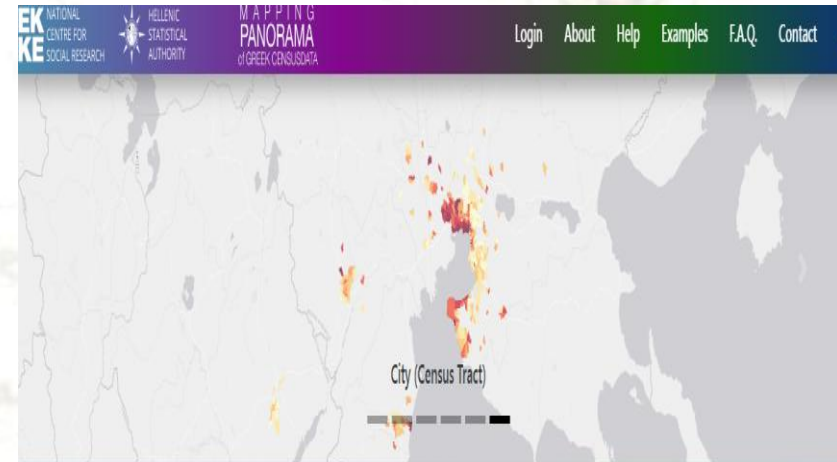


Hellenic Statistical Authority

Register Sign In Ελληνικά

About us **Statistics** Classifications Products and Services e-Publications in Greece Worldwide

Statistics / Data visualisations / Interactive maps /



Census 2011: Interactive Map (Adobe Flash)

Census 2011: Interactive Map

Basic indices by administrative division: Interactive Map

Basic indices: Interactive Map

Panorama Greek census data

Panorama census data

Navigation Menu

Interactive maps

Eurostat visualisations

Infographics

Mapping Panorama of Greek Census Data 1991 - 2011

A project from the Hellenic National Center for Social Research, jointly produced with the Hellenic Statistical Authority

Welcome to version 2.0 of Mapping Panorama. Part of the functionality is in beta status.

Access is currently limited to registered users.

To login or register, please use the link below

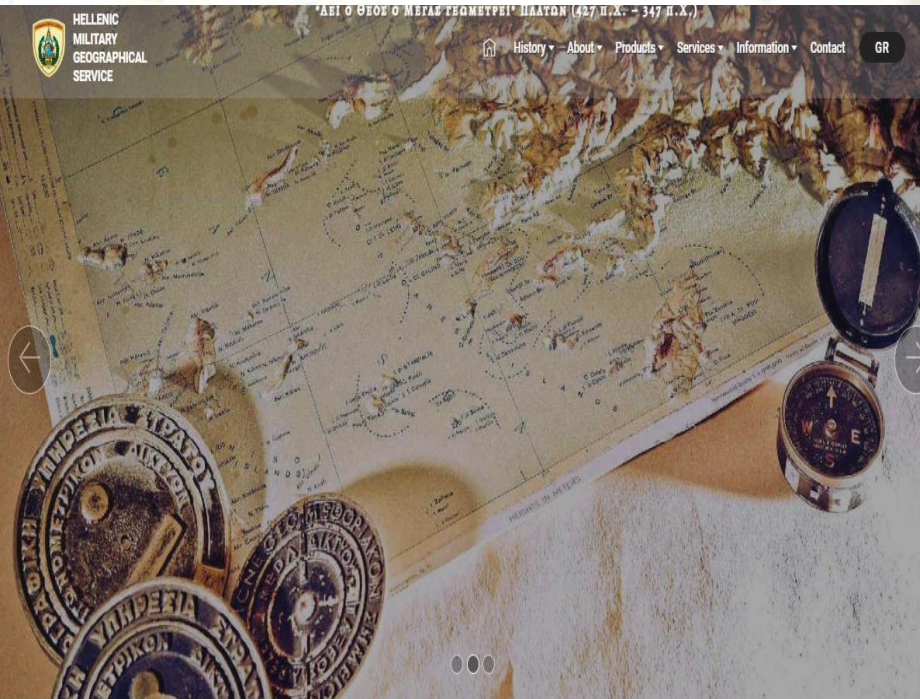
Login Register

<https://www.statistics.gr/en/elstat-maps-geo>

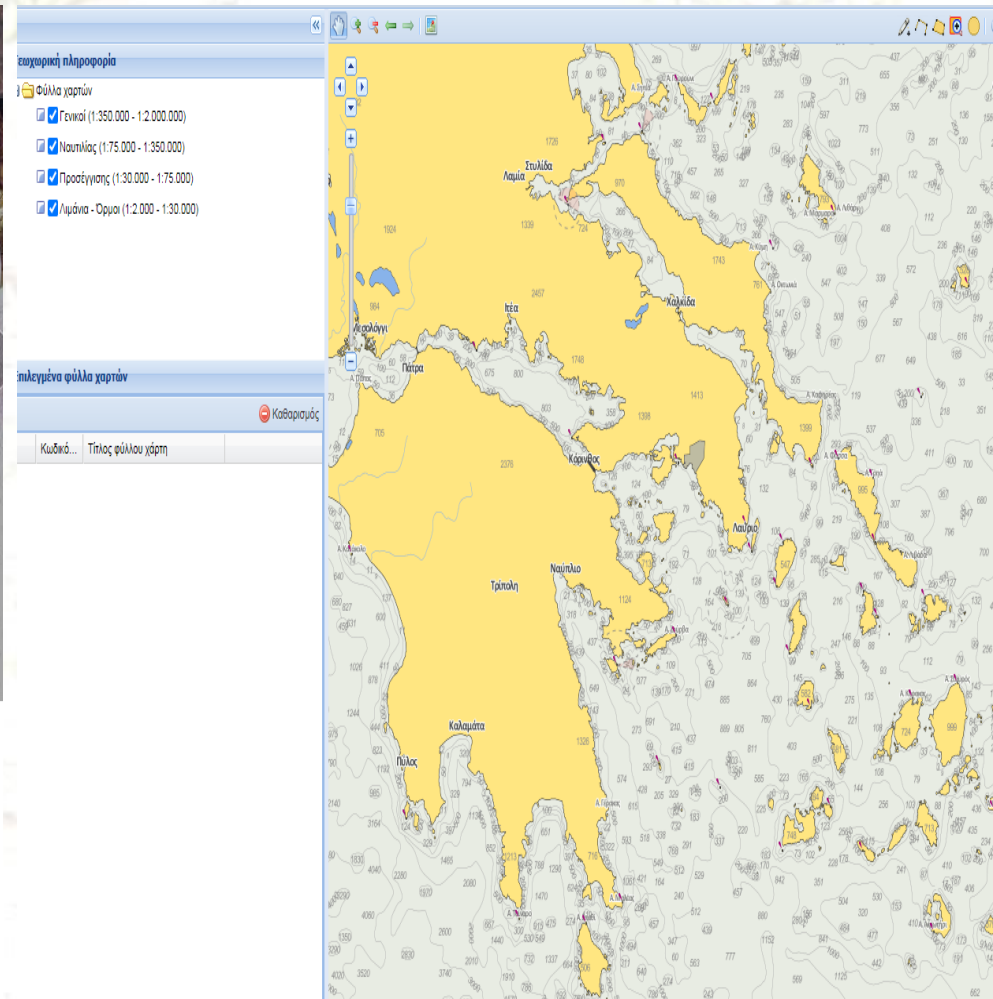
<https://panoramaps2.statistics.gr/>

Overview of Map/GIS Collections and Services in Greece (11/11)

Hellenic Military Geographical Service



Hellenic Navy Hydrographic Service - GEOINDEX



https://www.gvs.gr/index_en.html

<https://www.hnhs.gr/geoindex/index.html?lang=el>

Challenges (1/4)

Libraries/ Services

- Lack of Geographical Collections & GIS services in Greek Academic Libraries

Librarians

- Lack of skills needed to manage Geographical Information
- Lack of involvement with Geospatial Data even in their own academic community
- Unable to manage Geographical material finances

Users

- Consider the geospatial collections in Greece insufficient
- Choose the internet to cover their geo-digital needs
- The use of Greek libraries do not fulfil their expectations
- Consider policies' development as a factor to improve geographical collections

(Vardakosta et.al., 2016 ; Vardakosta & Kapidakis, 2014; Liarou, 2015; Vardakosta & Kapidakis, 2012)

Challenges (2/4)

❑ Funding issues

- Lack of acquiring geographical material
- Lack of hiring staff for developing geographical collection

❑ Staff and expertise

- Lack of courses related to Map/GIS Librarianship in the academic curricula of Library Science Departments
- Geographical collections lack of a Geo-information literacy framework
- Many OPAC's lack of geographic information (number, size, coordinates, scale, projection and geographic area) in their map records as it is not used in coded form

Challenges (3/4)



Συλλογ. Όργανο **Γεωγραφική Υπηρεσία Στρατού**
Συγγραφ
Τίτλος **Γύθειον [Χάρτης] = Yithion / Γεωγραφική Υπηρεσία Στρατού.**
Δημοσίευση [χ.τ.] : Γεωγραφική Υπηρεσία Στρατού, 1978.

Αντίτυπα

Τοποθεσία	Ταξιδιωτικός Αρ.	Τόμος	Κατάσταση	Ραβδοκώδικας	Δημόσια Σημείωση
UNIV. THESSALY - CENTRAL LIBRARY	MAP 912.495 22		Στο Ράφι	004000052886	

Περισσότερα στοιχεία για το τεκμήριο

Περιγραφή 1 χάρτης : έγχρ. ; 76x56 εκ.
Σημείωση Περιέχει ευρετήριο όρων.
Περιέχει λεξικό όρων.
Θέμα **ΤΟΠΟΓΡΑΦΙΚΟΙ ΧΑΡΤΕΣ -- ΕΛΛΑΔΑ -- ΓΥΘΕΙΟ (ΛΑΚΩΝΙΑ)
ΓΥΘΕΙΟ (ΛΑΚΩΝΙΑ, ΕΛΛΑΔΑ) -- ΧΑΡΤΕΣ, ΤΟΠΟΓΡΑΦΙΚΟΙ**
Παράλληλος Yithion
Τίτλος

Φύλλον Σπάρτη

Συλλογικό Έργο:

Ινστιτούτο Γεωλογικών και Μεταλλευτικών Ερευνών (Ελλάδα), Ινστιτούτο Γεωλογίας και Ερευνών Υπεδάφους (Ελλάδα) (επιμελητής εκδόσεως.)

Άλλοι συγγραφείς:

Φιλιππάκης, Ν. (γεωλόγος.), Richard, R., (γεωλόγος.)

Μορφή:

Χάρτης, Βιβλίο

Γλώσσα:

Ελληνικά

Έκδοση:

[Αθήνα] : Το Ινστιτούτο, 1969.

Σειρά:

Φωτογεωλογικός χάρτης της Ελλάδος.
Photogeological map of Greece.

Θέματα:

Γεωλογία > Ελλάδα > Χάρτες
Geology > Greece > Maps

Συλλογή:

Χάρτες

Τεκμήρια

[Περιγραφή](#)

[Παρόμοια τεκμήρια](#)

[Λεπτομερής προβολή](#)

Share

Μόνιμος Σύνδεσμος

Challenges (4/4)

- ❑ Limited access to technology and infrastructure related to GIS
- ❑ Inadequate promotion of the Map/GIS collections
 - While the library maintains a map collection this type of material does not appear on its website in the material type section
- ❑ Lack of national coordination

Opportunities

❑ Potential for collaboration and partnerships

➤ Collaborations with other Map/GIS Libraries and other institutions comprehend the administrations' commitment to collaboration goals fulfillment

➤ The **Greek Academic Geographical Libraries Group** is worth mentioning as an example of libraries' collaboration

<https://greekgeolibraries.webador.com/>

❑ Integration of new technologies in the library environment

➤ Libraries are natural facilitators of communication technologies

❑ Increased awareness and demand for GIS services

➤ New forms of geographic representation are developing as a result of the use of new computer technologies & analytic techniques

Suggestions

- ✓ Geographical Information related course/s to the Greek Librarianship Departments
- ✓ Geo-Information Literacy programmes
- ✓ National collaboration in the management of the Geographical Information
- ✓ Raise awareness for national collaborative activities
- ✓ Training activities to strengthen librarians' skills
- ✓ Collaborations with Geo-Departments and Geo-scientists



Thank you!

Ifigenia Vardakosta
ifigenia@hua.gr

QQML 2023
Hellenic Mediterranean University
Heraklion, Crete, Greece
30 May-3 June



REFERENCES

- Liarou, M. (2015). Adoption of GIS services in academic libraries. Master Thesis (unpublished). University of Macedonia In digital form, <https://dspace.lib.uom.gr/handle/2159/17046>
- Vardakosta, I. and Kapidakis, S. (2012).GIS services in Academic Libraries, in 7th Panhellenic Conference of HellasGIs, Athens, May 17-18
- Vardakosta, I. and Kapidakis, S. (2012). [*Policies for Geospatial Collections: a Research in US and Canadian Academic Libraries.*](#) In 2nd Workshop on Digital Information Management, Corfu (GR), April 25-26.
- Vardakosta, I. and Kapidakis, S. (2014). [*Users perspectives for geospatial collections development in an open access era: The case of Greek libraries.*](#) In British Cartographic Society-Map Curators Group Workshop, Birmingham (UK), 9-10 September.
- Vardakosta, I., Aguilar-Moreno, E., Granell-Canut, C. and Kapidakis, S. (2016). [*Geoskills among academic librarians in Greece, Cyprus and Spain.*](#) *The Journal of Academic Librarianship*, 45 (2), 485-494.
- Vardakosta, I. (2023). Effective Management of Geographical Information in Map/GIS Libraries, in 17th ICA Conference-Commission on Digital Approaches to Cartographic Heritage, supported by the [*MAGIC - Map & Geoinformation Curators Group*](#), Thessaloniki, 24-26 May 2023



Presentation Map

J. Blaeus grooten atlas, oft werelt-beschryving, in welcke 't aerdryck, de zee, en hemel, wort verthoont en beschreven : eerste deel des aerdkloots-beschryving, inhoudende de afbeeldingen en beschryvingen der landen op het aerdryck. By Joan Blaeu, T'Amsterdam, 1648-1665

Retrieved from: <https://www.oldmapsonline.org/map/uu/1874-406669-066>