

JISC



Theses Alive! - an ETD management system for the UK

Theo Andrew and Richard Jones

Theses Alive!
University of Edinburgh

Theses Alive!

- lead site Edinburgh
- pilot partners
 - Cambridge, Cranfield, Leeds, Manchester Metropolitan
- funding: JISC (FAIR programme) and UoE
- duration: 2 years, November 2002 – October 2004

project aims 1

- to develop an OAI-compliant thesis archive and submission system for use in all participating universities
- to develop an infrastructure which enables e-theses to be published on the web to the extent that a minimum of 500 e-theses exist within the UK segment of the NDLTD after 2 years

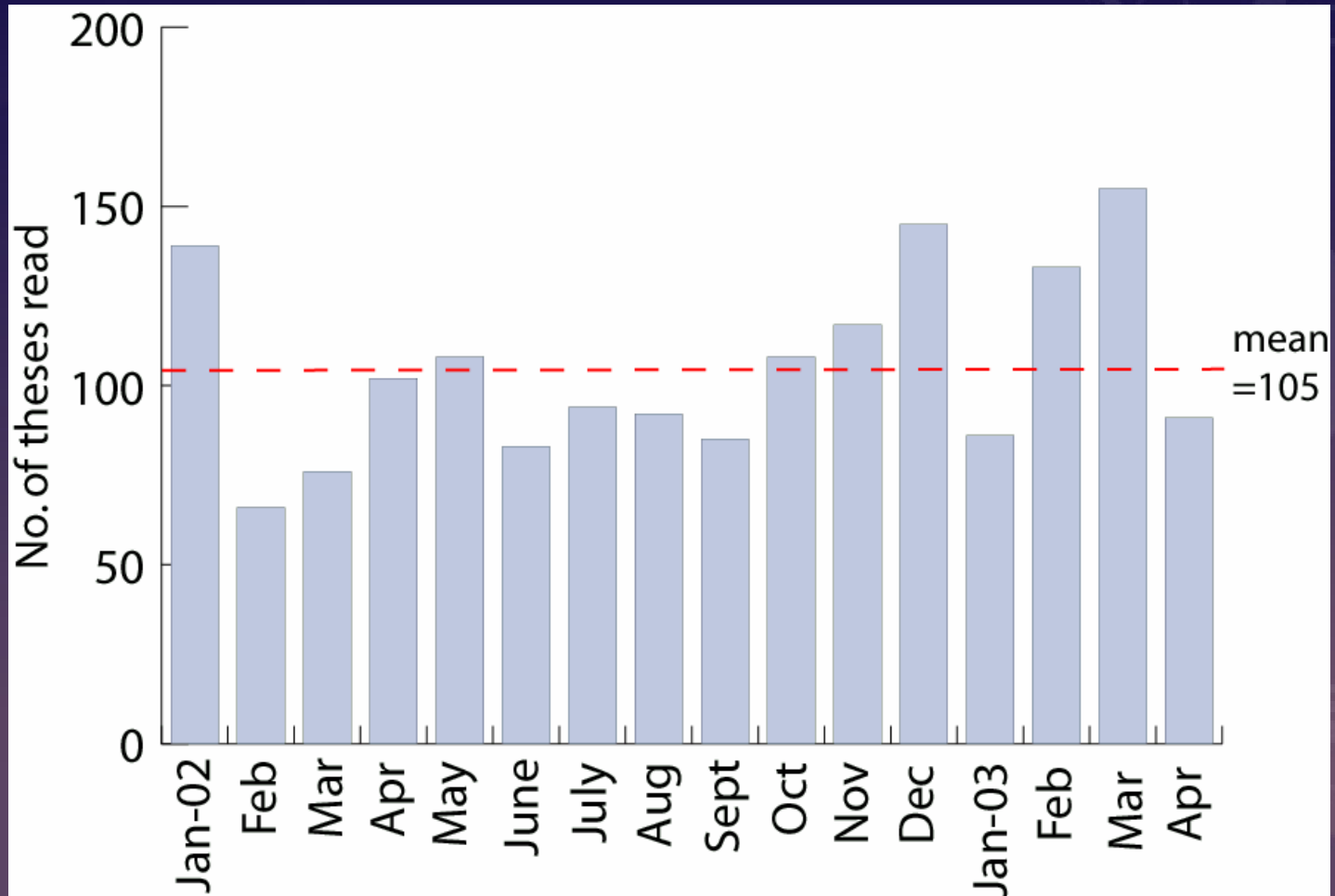
project aims 2

- to develop and implement a metadata export system (crosswalk) capable of delivering our metadata to relevant metadata repositories for UK thesis information (BL, Index to Theses)
- To produce a 'checklist approach' for universities to use as they develop e-theses capability

background

- traditional thesis access
 - special collections reading room
 - Inter Library Loan request
- current online access
 - individual web pages
 - departmental web pages

reading room statistics



ILL requests

- 2002- 155 estimates, 58 copies sent
- 2003 (to date) - 110 estimates, 47 copies sent
- High cost
 - 300 pages £60 +VAT/P&P
 - 300-600 pages £100 +VAT/P&P

current online access

The image shows two overlapping browser windows. The left window displays 'Jeroen's homepage' with a navigation menu (Introduction, Research, Publications) and a list of publications under 'Refereed journal papers' and 'Refereed conference and workshop papers'. The right window shows the 'Thesis Submission Form' for the School of Informatics at the University of Edinburgh. The form includes fields for Degree (PhD/MSc), Year of Graduation, Absolute pathname of thesis to submit (PDF version), Title of thesis, Author (Last Name, First Name, Enrolment/Matriculation Number), and a Copyright section. A 'SUBMIT form and copy of file' button is visible.

Jeroen's homepage

- Introduction
- Research
- Publications

Refereed journal papers

- Keppens, J. & Shen, Q. On Compositional Modelling. *The Knowledge Engineering Review*, Vol.16:2, pages 157-200, 2001. [Abstract, electronic copy & full reference]

Refereed conference and workshop papers

- Keppens, J. & Schafer, B. Using the box to think outside it - creative scepticism and computer decision support in criminal investigations. To appear in Proceedings of the IVR 21th World Congress Special Workshop on Artificial Intelligence in the Law: Creativity in Legal Problem Solving, 2003.
- Keppens, J. & Shen, Q. Ecological Model Repositories Revisited: Casting Ecological Model Composition Problems as Dynamic Constraint Satisfaction Problems. In *Proceedings of the 17th International Workshop on Qualitative Reasoning*, 2003. [Abstract, electronic copy, slides & full reference]
- Halliwell, J., Keppens, J. & Shen, Q. Linguistic Bayesian Networks for Reasoning with Subjective Probabilities in Forensic Statistics. In *Proceedings of the 9th International Conference on Artificial Intelligence and Law*, pages 42-50, 2003. [Abstract, electronic copy, slides & full reference]
- Keppens, J. & Zeleznikow, J. A Model Based Reasoning Approach for Generating Plausible Crime Scenarios from Evidence. In *Proceedings of the 9th International Conference on Artificial Intelligence and Law*, pages 51-59, 2003. [Abstract, electronic copy, slides & full reference]
- Keppens, J. & Zeleznikow, J. On the Role of Model-based Reasoning in Decision Support in Crime Investigation. In *Proceedings of the 7th International Conference on Law*

Thesis Submission Form

School of Informatics

home | news | people | research | undergraduates | postgraduate | search

Degree (PhD/MSc) Year of Graduation

Absolute pathname of thesis to submit (PDF version) Choose

Title of thesis

Author

Last Name First Name Enrolment/Matriculation Number

SUBMIT form and copy of file

Copyright

In submitting my thesis for inclusion in the archive, I confirm that it may be copied and distributed by the School of Informatics for the purposes of research, private study or education. I also allow the School of Informatics to recover from the recipient any costs incurred in such copying and distribution, where this is appropriate.

[Home](#)

Please [contact our webadmin](#) with any comments or corrections.
Unless explicitly stated otherwise, all material is copyright The University of Edinburgh

- 100+ PhD and MSc theses

Available Software

- DSpace – HP and MIT
- ETD-db – Virginia Tech
- EPrints – University of Southampton

Comparative Evaluation:

<http://www.thesesalive.ac.uk/archive/ComparativeEvaluation.pdf>

Why DSpace?

- More powerful and more functionality
- Better supported
- Continued development
- Digital preservation
- Open Archives Initiative – Protocol for Metadata Harvesting (OAI-PMH) v2.0

Search DSpace:

[Advanced Search](#)

[Home](#)

Browse

[Communities & Collections](#)

[Titles](#)

[Authors](#)

[By Date](#)

Sign on to:

[Receive email updates](#)

[My DSpace authorized users](#)

[Edit Profile](#)

[Help](#)

[About DSpace](#)

[EUL - Theses Alive!](#) >

Science & Engineering

Community home page

In:
Search for
or browse

Collections in this community

- [Botany](#)
- [Electrical Engineering](#)
- [Engineering](#)
- [Forestry and Natural Resources](#)
- [Informatics](#)
- [Physics & Astronomy](#)

Copyright EUL

Recent Submissions

[Can you see this workspace test](#)

[Model Building in Neural Networks and Hidden Markov Models](#)

[Geographical Variation in Sitka Spruce Productivity and its Dependence on Environmental Factors](#)

[Crown structure, radiation absorption, photosynthesis and transpiration](#)

[The Red Squirrel \(Sciurus vulgaris L.\) in Relation to its Food Resource](#)

Theses Alive! timeline

- phase one (Deposit)
 - deposit of final version (post-viva)
 - December 2003
- phase two (Submission)
 - submission for examination (pre-viva)
 - Spring 2004

EUL-DSpace Add-On

- Workspace for thesis authoring and supervision
- Workflow features for thesis submission
- Required forms for submission (intention to submit)
- Metadata export/crosswalk facilities
- Withhold option at archive end

Work Done So Far

The Workspace

- Notes system for communication between student and supervisors
- Supervision system for addition of supervising academics to view and modify submissions
- Additional administrative tools

Logged in as
dspace@srv4.lib.e...
(Logout)

[EUL - Theses Alive!](#) >

Search DSpace:

Go
[Advanced Search](#)

[Home](#)

Browse

- [Communities & Collections](#)
- [Titles](#)
- [Authors](#)
- [By Date](#)

Sign on to:

- [Receive email updates](#)
- [My DSpace authorized users](#)
- [Edit Profile](#)
- [Help](#)
- [About DSpace](#)

My DSpace: DSpace Administrator

[Help...](#)

Tasks in the Pool

Below are tasks in the task pool that have been assigned to you.

Task	Item	Submitted To	Submitted By	
Review Submission	df asfds	My Test Collection	DSpace Administrator	Take Task

[Start a New Submission](#)

[View Accepted Submissions](#)

[See Your Subscriptions](#)

Workspace

This section is for use in the continued authoring of your document.

			Submitted by	Title	Submitted to	
Notes	View	Open	DSpace Administrator	Untitled	Another Test Collection	Remove
Notes	View	Open	DSpace Administrator	Test Submission Beta	Electrical Engineering	Remove
Notes	View	Open	DSpace Administrator	Test Submission Gamma	Informatics	Remove
Notes	View	Open	DSpace Administrator	Test Submission Delta	Forestry and Natural Resources	Remove
Notes	View	Open	DSpace Administrator	Untitled	My Other Test	Remove

Submissions In Workflow Process

Title	Submitted to
df asfds	My Test Collection
Resource Policy Removal Test	Another Test Collection

- Communities/
Collections
- E-people
- Groups
- Items
- Dublin Core
Registry
- Bitstream Format
Registry
- Workflow
- Authorization
- Supervisors
- Log Out

[EUI - Theses Alive!](#) >
[Administer](#) >

Administer Supervising Groups

Choose a Group, WorkSpace Item, and Initial Policy Setting to apply:

Group:

Initial Policy Setting:

WorkSpace to be Supervised:

ID	Submitted by	Title	Submitted to	Select
72	DSpace Administrator	Untitled	Another Test Collection	<input type="radio"/>
74	DSpace Administrator	Test Submission Beta	Electrical Engineering	<input type="radio"/>
75	DSpace Administrator	Test Submission Gamma	Informatics	<input type="radio"/>
76	DSpace Administrator	Test Submission Delta	Forestry and Natural Resources	<input type="radio"/>
79	DSpace Administrator	Untitled	My Other Test	<input type="radio"/>

in conclusion....

- not only looking at the physical act of building and populating an E-Theses archive...
- but, addressing the requirements of university administrators, examiners, students and academics
- requires a *new role* for the Library/Information Services – not simply a replacement for traditional interlibrary loan

Thank You!

theo.andrew@ed.ac.uk

r.d.jones@ed.ac.uk

www.thesesalive.ac.uk