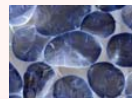


# The role of bibliographic databases in the resource discovery and linking process

Andrea Powell  
Product Development Director  
CABI Publishing  
[a.powell@cabi.org](mailto:a.powell@cabi.org)



THE SCIENCE



THE SEARCH  
[www.cabi-publishing.org](http://www.cabi-publishing.org)



THE SOLUTION



# The role of A&I databases

- Comprehensive index of all relevant material in a given subject area
- Consistent indexing using controlled vocabulary and/or classification schemes
- Standardisation of formats and terminology
- Coverage of all document types
- Easily accessible via many different platforms and vendors
- Enough information to link to the full-text

# Use of A&I databases

- Despite many predictions, it's not going away!
- Los Alamos researchers use A&I databases 60% of the time to link to full-text
- In a JSTOR survey, 37% of respondents start their search in an online database
- ALPSP surveys of academic authors consistently rank inclusion of journals in A&I databases as “extremely important” when choosing where to publish their research

# Linking to full-text online

- DOIs captured wherever possible
- OpenURL linking used where DOIs are not available, or the content doesn't have one, or for integration with Link Resolvers
- Inclusion of document URLs
- Bi-lateral arrangements with primary content providers (especially when linking via hosts)
- Other bespoke services to link to other content types (e.g. patents, Genbank)

# Linking to full-text online

- Links to web search engines (e.g. Google, Scirus) to expand resource discovery
- Links to document delivery providers for paper-based supply
- Harvesting of OAI-compliant metadata to include new types of web-based content

# It's not always that easy...

- DOIs can be found for c.18% of CAB Abstracts records (should be c.40%)
- Not all of our hosts activate DOIs
- Not everyone has a Link Resolver
- URLs are not always permanent
- Lots of content isn't online!
- Which version of the full-text do we point to?
- How do we find out about new content?
- Some users complain about lack of links; does this affect our selection policy?

# Linking *to* A&I databases

- Pioneered by PubMed, and now adopted by many secondaries, e.g. CSA, CABI
- A link to an abstract can fill a gap when there's no full-text available...
- ...but can be confusing or irritating if there is!
- Much harder to do if the database is not a free resource
- Developments in the OpenURL make inward linking much more feasible

# A&I services of the future

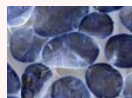
- Will continue to fill an important role for resource discovery as content proliferates
- Need to adapt to new methods of scholarly communication
- Need to be involved in industry developments
- Need to be easy to use and compatible with many end-user platforms
- Will focus more on analysis and evaluation than simply recording the published research



# Thank you!



THE SCIENCE



THE SEARCH  
[www.cabi-publishing.org](http://www.cabi-publishing.org)



THE SOLUTION

