

# HARNESSING INFORMATION TECHNOLOGY FOR SOCIAL SCIENTISTS

**Dr. Muttayya Koganuramath**  
**University Librarian**  
**Tata Institute of Social Sciences**  
**Deonar**  
**Mumbai - 400 088**

**Mallikarjun Angadi**  
**Information Scientist**  
**Tata Institute of Social Sciences**  
**Deonar,**  
**Mumbai - 400 088**

## **Abstract:**

*The recent great strides in technology presents tremendous opportunities for human development, but achieving that potential depends on how technology is being used. The fusion of computing and communications, especially through Internet, has broken the bounds of cost, time and distances, launching an era of global information networking that led to exponential growth of literature in all fields and social work is no exception to it. The Internet emerged as a formidable social and cultural institution of global proportions facilitating social scientists and social workers to access wealth of information on the web to support their academic and field activities. This paper spreads a light on the fast emerging new area of cyber social work and various electronic information sources and information technology tools in the field of social sciences with more specific to social work.*

## **INTRODUCTION**

The time has come when we should examine the various approaches and adaption of new technologies for the betterment of the society as a whole. Technology is evolving ever increasing rates, changing the way people live, work...and use information. People need access to greater amounts of more current material and they expect access to be fast, accurate and cost effective. And computer & communication technologies had greater impact on the activities of social scientists- This new technology facilitated maximum information retrieval, information exchange & discussion among social scientists and dissemination of information through electronic publishing. With emergence of information age, the whole world is turning into a global village. Now-a-days one can reach out any part of the world with a single click of the mouse. Social Work like any other human service profession finds itself facing the onslaught of computer technology.

## **CYBER SOCIAL WORK**

Emergence of INTERNET, a global network, has facilitated social scientists to share services and correspond directly as if they were part of giant machine. The INTERNET encompass a broad range of information services to education & research activity of social

scientists. Brainbridge (1995) asserted that the INTERNET has the potential to enhance scientific progress, present new opportunities for research. Yet he stated "Sociologists are only beginning to become critical of the potential social harm of the universal net, however and to take advantage of research opportunities to study net society" [5].

### **What is Cyber Social Work ?**

Cyber Social Work is the utilization of Internet technology to enhance social work practice. This enhanced practice includes the use of web pages, listservs, E-mail, chat rooms, search engines, and other interactive web-based technologies to communicate with clients and colleagues, gather and disseminate information related to social work practice, engage in social and political advocacy, and to advance the social work profession nationally and internationally. Social workers do not have to become Internet literate, however, those who do not will be at a great disadvantage as private practices, nonprofit and public agencies, and the rest of the world use Internet technology as an integral part of their personal and organizational lives.

### **How can you use the Internet in your practice ?**

#### **E-mail:**

E-mail is the widely used area that allows social scientists for efficient communication in a short time irrespective of geographical region. It is faster than any other technology for sending information from one place to other place and it does not require the recipient at the other end. It is stored in recipients network & can be accessed when inbox is opened. Even students through this media can correspond with their instructors to enhance classroom information and to interact with their peers.

Many public agencies and nonprofit associations are now using e-mail to communicate both within and without the organization. Many computers within the organization are now "networked" (connected) and you can leave e-mail messages for colleagues. In addition, with Internet access you can e-mail other organizations, clients, providers, etc.. There are many web-mail services available freely on the Internet Viz., Hotmail, Excite, Yahoo, USAnet which you can access from the following URLs.

<http://www.hotmail.com>

<http://mail.excite.com>

<http://mail.yahoo.com>

<http://www.netaddress.com>

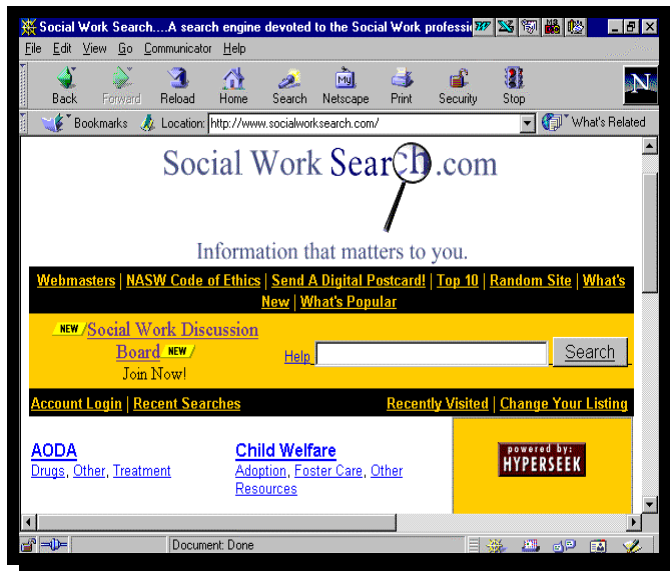
#### **Listsers:**

Listsers are similar to e-mail but you are communicating with more than one person at the same time. When you subscribe to a listserv you are automatically connected by e-mail to all the members on the list. So when you send your message to "the list" you are sending the same message to everyone at the same time. Each member can respond back to the list with his/her response. This response is again sent to all list members. A thread" is a number of messages related to the same topic. There are many many listsers available today (See Appendix II).

## Chat rooms:

Chat rooms are a lot of fun! They are also a great way to communicate with colleagues and/or clients in "real time". A chat room is a designated space on the Internet where individuals meet to discuss issues related to a specific topic. Some examples are the Social Work Forum chats on America Online. For those of you who are not on America Online you can explore an internet social work chat room by going to <http://www.socialworkonline.com/chat.htm>. You can create your own chat room for free by going to <http://www.beseen.com> and downloading the chat room software.

## Search engines:



Search engines are programs which will search the internet for a particular subject of interest to you. There are many search engines, but three that you will find extremely helpful to your practice are Grassroots Social Science Search at

<http://www.andrews.edu/SOWK/grassroots.htm>, Social Work Access Network at <http://www.sc.edu/swan/> and Gary Holden's World Wide Web Resources for Social Workers at <http://www.nyu.edu/socialwork/wwrsw/>.

## Online Counseling and Support:

This phenomenon of providing counseling services to clients through the use of the internet in the form of e-mails and chatrooms is growing rapidly. The social work profession has not yet determined practice standards for the practice of online counseling, however, the National Board for Certified Counselors have established general guidelines for the practice. You can view these guidelines by viewing their page at <http://www.nbcc.org/ethics/wcstandards.htm>. Online counseling provides some unique opportunities: 1) online counseling is easier than face-to-face for some hesitant clients who may never get the courage to go to see a therapist, 2) online counseling may provide an avenue to develop a more traditional face-to-face traditional session for fearful clients, 3), online counseling reduces geographical and physical impediments, and 4) online counseling permits an immediate record of the verbal exchange.

## Distance Learning:

Although the traditional classroom model is still prevalent, social workers and other health and mental health practitioners are now offered both undergraduate, graduate, and continuing education opportunities via the Internet. To add ice to the cake, the University of Utah will soon be offer a PH.D. program in social work almost completely online with very short periods of residency on campus. Many MSW programs are beginning to offer

some courses via the Internet. The American Medical Association offers online continuing education at <http://www.cmeweb.com/>. Another website that offers continuing education for social workers is CEUs at <http://edx.org/ceu/>.

### **Technology Conference:**

Many social work educators and clinicians realize the importance of technology to the future of social work practice. Social work schools are offering on-line courses, clinicians and researchers are developing new ways of using internet technology to enhance the profession.

### **Social Work Journals**

This is a list of social work, and social work related, journals that have a presence of the World Wide Web. It should be noted that most of these web sites do not provide more than a description of the publication and subscription information. Some have tables of contents for some or all of its issues. A few have abstracts. None, except for the on-line journals, offer full-text articles. For your convenience I have listed the type of content you will find on each web. If the site includes tables of contents, abstracts, articles or any distinctive resources, it has been noted.

Administration in Social Work - Tables of content, abstracts, search capacity.  
<http://bubl.ac.uk/journals/soc/aisw/>

Child and Adolescent Social Work Journal - Sample copy available.  
<http://www.plenum.com/title.cgi?1003>

Child and Family Social Work Journal - Tables of contents, sample copy available.  
<http://www.blacksci.co.uk/products/journals/cfsw.htm>

Child Welfare Online Review - An Online Journal with tons of articles.  
<http://childwelfare.com/kids/news.htm>

Clinical Social Work Journal - Tables of contents, abstracts.  
<http://www.webcom.com/nfscsw/cswj/cswj.html>

Community Mental Health Journal - Sample Copy available.  
<http://www.plenum.com/title.cgi?1009>

Computers in Human Services - Abstracts, tables of contents.  
<http://www.uta.edu/cussn/chs.html>

Contemporary Family Therapy - Sample Copy Available  
<http://www.plenum.com/title.cgi?1010>

European Journal of Social Work - Table of contents, abstracts, search capacity.  
<http://www.oup.co.uk/eurswk/>

Irish Journal of Social Work Research- Table of contents.

<http://ireland.iol.ie/~iasw/researchjournal.html>

Journal of Child and Adolescent Group Therapy - Sample Copy Available.  
<http://www.plenum.com/title.cgi?1039>

Journal of Couples Therapy- Abstracts, tables of contents, search capacity.  
<http://bubl.ac.uk/journals/soc/jcouthe/>

Journal of Family Social Work - Abstracts, table of contents, search capacity.  
<http://bubl.ac.uk/journals/soc/jfsw/>

Journal of Social Work Practice - Tables of contents, sample copy available.  
<http://www.carfax.co.uk/jsw-ad.htm>

Journal of Family Violence - Sample Copy Available.  
<http://www.plenum.com/title.cgi?1039>

Journal of Health and Social Policy - Abstracts, tables of contents, search capacity.  
<http://bubl.ac.uk/journals/soc/jhasp/>

Journal of Poverty - Abstracts, tables of contents.  
<http://128.146.40.65/jpov/>

New Technology in the Human Services - Abstracts, tables of contents.  
<http://www.fz.hse.nl/nths/>

Social Service Review - Table of contents, an index of all articles with abstracts from 1990-1995.  
<http://www.journals.uchicago.edu/SSR/>

The Advocate's Forum - A full-text on-line journal by students at The University of Chicago.  
[http://www.ssa.uchicago.edu/advocates\\_forum.html](http://www.ssa.uchicago.edu/advocates_forum.html)

## **Conclusion:**

The fusion of computing and communications has quickened the pace of growth and innovation in information technologies. As information technologies permit new patterns of living, working and organizing the social community, it is on the part of the social workers to take advantages of these new approaches.

It hardly needs to be emphasised that, information technology had greater impact on every sphere of human activity including Social Sciences. The pace of application of technology in the field of science & technology is faster than that of social sciences. To keep pace with time, social scientists needs to apply various information technologies for their academic and research information needs. Awareness about the successful utilisation of information technology in the field of social sciences is need of the hour, so that it can be utilised optimally.

Information Technologies not only shape our world view, they also give us greater power to change our world. We have a responsibility to harness these tools to build a healthier and more equitable future.

## **References**

1. Lyman, P. (1989). The future of Sociological literature in an age of computerised texts. In new technology in sociology: practical applications in research and work, G.Blank (Ed.0, New Brunswick, N.J.: Transaction.
2. Brent, E. (1993). Computational Sociology: reinvesting sociology for the next millennium social science computer review-11, 497-99p.
3. Raymond, M. Lee, Ed- Information Technology for social scientists, London: UCL press, 1995.
4. Brent, E.E. and Anderson, R.E., computer applications in the social sciences Philadelphia: Temple University Press, 1990.
5. Brainbridge, W.S- (1995), Sociology on the WWW, Social Science Computer Review, 13. 508-523p.
6. Jange, Suresh and Koganuramath, M.M. (1998), Use of information sources for social care professionals: A case study, 49th FID Congress, New Delhi.
7. Giffords,Elissa, D (1998), Social Work on the INTERNET: an introduction to social work, 43(3), 245-251p.

## APPENDIX - I

### SOCIAL WORK RESOURCES ON INTERNET

World Wide Web Resources for Social Workers

<http://www.nyu.edu/socialwork/wwwrsrw/>

Resources for Social Workers

<http://www.colostate.edu/Depts/SocWork/webstuff.html>

SWAN Social Work Access Network

<http://www.sc.edu/swan/>

Mickey's Place in the Sun Social Work and Social Services Resources

<http://people.delphi.com/mickjyoung/social.html>

Social Work on the Web

[http://www.umanitoba.ca/SocialWork/sw\\_web.html](http://www.umanitoba.ca/SocialWork/sw_web.html)

Social Work Cafe

<http://www.geocities.com/Heartland/4862/>

International Federation of Social Workers

<http://www.ifsw.org/>

National Institute for Social Work - UK

<http://www.nisw.org.uk/>

The National Association of Social Workers - US

<http://www.naswdc.org/>

The Israel Association of Social Workers - ISRAEL

<http://www.isassw.org.il/>

CUSSN CUSSN Software Connection

<http://www.uta.edu/cussn/diskcopy.htm>

The National Association of Social Workers

<http://www.naswdc.org/>

The New Social Worker,

<http://www.socialworker.com/websites.htm>

The Clinical Social Work Federation webpage,

<http://www.cswf.org/>

The Maryland chapter of the National Association of Social Workers ,

<http://www.nasw-md.org>

The Maryland Society for Clinical Social Work web page,

<http://members.aol.com/MSCSW/Page1.html>

<http://www.geocities.com/Heartland/4862/cswhome.html>

Web Resources For Social Workers -Contains both clinical and generalist resources.

<http://www.colostate.edu/Dept/SocWork/web%20links.html>

Social Work And Social Service Web Sites -Another large set of links covering a broad range of interests. Originates from George Warren Brown School of Social Work.

<http://gwbweb.wustl.edu/websites.html>

World Wide Web Resources for Social Workers -Dr. Holden's long and impressive list is heavy on university and government sources. Highly recommended.

<http://www.nyu.edu/socialwork/wwwrsw/>

SocialWorkSearch.com - A search engine specifically created for the need of the social worker. A site with great potential, but the search results appear a bit sparse right now.

<http://www.socialworksearch.com/>

Grassroots -A searchable database that categorizes its sources based on the nine diversity areas of social work. This is a impressive searching tool for the social worker.

<http://www.andrews.edu/SOWK/grassroots.htm>

The Rock Island Network -Ed Kennedy's nice site contains social work and news links.

<http://home.thezone.net/~webedit/>

Sociosite -A Netherland based directory for sociology, social policy, and social work. The place to go for European information.

<http://www.pscw.uva.nl/sociosite/index.html>

The Murray Research Center - This center at Radcliffe College is one of the best research sites on the web. Valuable for social worker researchers, students and sociologists.

<http://www.radcliffe.edu/murray/>

Bobst Library Social Work Resources -The New York University library offers a wide array of resources and a research guide for social workers.

<http://www.nyu.edu/library/bobst/research/soc/socwork/>

www.ClinicalSocialWork.com -Pat McClendon's excellent web site for clinical social workers. Its strong points are the very informative articles and links about trauma and its effects.

<http://www.clinicalsocialwork.com>

The Therapeutic Milieu - Focusing on residential treatment issues and resources. Has a place for forum-styled discussions and a classified ads area.

<http://www.clinicalsocialwork.com>

Social Work History Station -A very nice multimedia project from Boise State University. An online exhibit on the 100 year history of social work

<http://www.idbsu.edu/socwork/dhuff/XX.htm>

## APPENDIX - II

### MAILING-LISTS

AAHESGIT (Listserv)

Post Address: [aahesgit@list.cren.net](mailto:aahesgit@list.cren.net)

Subscribe command: `subscribe AAHESGIT  
yourfirstname yourlastname`

Send command to: [listproc@list.cren.net](mailto:listproc@list.cren.net)

ADDICT-L (Addiction)

Post Address: [addict@kentvm.edu](mailto:addict@kentvm.edu)

Subscribe command: `subscribe addict-l`

Send command to: [listserv@kentvm.kent.edu](mailto:listserv@kentvm.kent.edu)

Listmanager: [ddelmon1@kentvm.kent.edu](mailto:ddelmon1@kentvm.kent.edu)

ADDICT-L (Addiction)

Post Address: [addict-l@kentvm.edu](mailto:addict-l@kentvm.edu)

Subscribe command: `subscribe addict-l`

Send command to: [listserv@kentvm.kent.edu](mailto:listserv@kentvm.kent.edu)

Listmanager: [ddelmon1@kentvm.kent.edu](mailto:ddelmon1@kentvm.kent.edu)

ACOSA-L (The Community Organization and Social Administration Discussion List)

Post Address: [acosa-l@wvnm.wvnet.edu](mailto:acosa-l@wvnm.wvnet.edu)

Subscribe command: `subscribe acosa-l [LastName]  
[FirstName]`

Send command to: [listserv@wvnm.wvnet.edu](mailto:listserv@wvnm.wvnet.edu)

Listmanager: [rlohmnn@wvu.edu](mailto:rlohmnn@wvu.edu)

ANSWER (List)

Post Address:

Subscribe command: `Personal Message`

Send command to: [pransome@naswdc.org](mailto:pransome@naswdc.org)

ARNOVA-L (Nonprofit Organizations, Voluntary Action and Philanthropy)

Post Address:

Subscribe command: `subscribe arnova-l`

Send command to: [listserv@wvnm.wvnet.edu](mailto:listserv@wvnm.wvnet.edu)



BEHAVIOR (Behavioral Disorders in Children and Youth)  
Post Address:  
Subscribe command: subscribe behavior [firstname] [lastname]  
Send command to: listserv@asuvm.inre.asu.edu

BSSWALUM (Alumni/ae of the Rochester Institute of Technology BSSW Program)  
Post Address: bsswalum@listserver.rit.edu  
Subscribe command: sub bsswalum lastname firstname  
Send command to: listserv@listserver.rit.edu  
Listmanager: mlsgsw@osfmail.isc.rit.edu

CTI-SOC-WORK-UK (Computers in Social Work Education)  
Post Address: cti-soc-work-uk@mailbase.ac.uk  
Subscribe command: join cti-soc-work-uk [firstname] [lastname]  
Send command to: mailbase@mailbase.ac.uk

CUSSNET (Computer Use in Social Services)  
Post Address: cussnet@listserv.uta.edu  
Subscribe command: subscribe cussnet [firstname] [lastname]  
Send command to: listserv@listserv.uta.edu

CWKGROUP (Issues Regarding the Computerization of Behavioral, Health, and Human Services Records)  
Post Address: cwkgroup@unmassd.edu  
Subscribe command: subscribe cwkgroup  
Send command to:  
cwkgroup-request@unmassd.edu

INTSOCWORK (International Social Work)  
Post Address: intsocwork@nisw.org.uk  
Subscribe command: subscribe intsocwork [your name]  
Send command to: listserv@nisw.org.uk

Indiana Social Workers List  
Post Address: indsw@bsu.edu  
Subscribe command: subscribe indsw  
Send command to: listserv@bsu.edu

NASW Managed Care List  
Post Address:  
managedcare@discuss.naswdc.org  
Subscribe command: join managedcare  
Send command to: list@discuss.naswdc.org

NASW-OK (Oklahoma Chapter of NASW)  
Post Address: nasw-ok@uo.edu  
Subscribe command: subscribe nasw-ok [your name]  
Send command to: listserv@uo.edu

ARSCWK-L (Arkansas List of Social Workers)  
Post Address:  
Subscribe command: subscribe arscwk-l  
Send command to: listserv@uafsysb.uark.edu

ATTACHMENT (Bowlby-Ainsworth's Theory of Attachment)  
Post Address:  
Subscribe command: join attachment  
Send command to: mailbase@mailbase.ac.uk

BSWSTUDENT (BSW Student & Recent Graduates Discussion List)  
Post Address: bswstudent@listserver.rit.edu  
Subscribe command: sub bswstudent lastname firstname  
Send command to: listserv@listserver.rit.edu  
Listmanager: mlsgsw@osfmail.isc.rit.edu

CHILD-MALTREATMENT-RESEARCH-L (Child Abuse Research)  
Post Address:  
Subscribe command: subscribe CHILD MALTREATMENT-RESEARCH-L [your name]  
Send command to: listproc@cornell.edu

CJUST-L (Criminal Justice List)  
Post Address: cjust-l@cuny.edu  
Subscribe command: subscribe CJUST-L  
Send command to: listserv@cuny.edu

Baccalaureate Social Work Education/BPD  
Post Address: bpd@listserver.rit.edu  
Subscribe command: sub bpd lastname firstname

Child Welfare Resource Centre Mailing List  
Post Address:  
Subscribe command: subscribe childwelfare [your email]  
Send command to: fill out simple one-line form at <http://www.childwelfare.ca>

DEAF-MAGAZINE (Weekly Magazine for the Deaf)  
Post Address:  
deaf-magazine@listserv.deaf-magazine.org  
Subscribe command: subscribe deaf-magazine  
Send command to:  
listserv@listserv.deaf-magazine.org

Drama Therapy Listserv  
Post Address:  
Subscribe command: subscribe dramatherapy-l {Your e-mail address}  
Send command to:  
majordomo@demeter.info.sunyit.edu

NCSOCWORK (North Carolina Social Work)  
Post Address: ncsocwork@uncp.edu.edu  
Subscribe command: subscribe ncsocwork [your  
name]  
Send command to:  
ncsocwork-request@uncp.edu.edu

RURALS WK (Rural Social Work List)  
Post Address: ruralswk@papa.uncp.edu  
Subscribe command: subscribe ruralswk  
Send command to:  
ruralswk-request@papa.uncp.edu

SCIOFSLW (Discussion of Philosophy and  
Science of Social Work)  
Post Address: sciofslw@lists.vcu.edu  
Subscribe command: subscribe sciofslw  
Send command to: listproc@lists.vcu.edu

SOCIALWEB (Discussion of Social Work  
Web Resource Management)  
Post Address: socialweb@social.syr.edu  
Subscribe command: subscribe socialweb [first  
name] [last name]  
Send command to: listserv@social.syr.edu

WEBPSYCH (WebPsych Partnership List)  
Post Address: webpsych@cmhc.com  
Subscribe command: subscribe webpsych [your  
name]  
Send command to: listproc@cmhc.com

WISOCWORK (Wisconsin Social Workers  
Discussion List)  
Post Address: wisocwork@uwrf.edu  
Subscribe command: subscribe wisocwork [email  
address]  
Send command to: majordomo@uwrf.edu

SWEAIDS-NET (Social Work Education on  
AIDS)  
Post Address: swaids-net@morgan.ucs.mun.ca  
Subscribe command: subscribe swaids-net [your  
name]  
Send command to: listserv@morgan.ucs.mun.ca

SWKRESEARCH (Social Work Research  
List)  
Post Address: swkresearch@papa.uncp.edu  
Subscribe command: subscribe swkresearch [your  
name]  
Send command to:  
swkresearch-request@papa.uncp.edu  
Listmanager: marson@papa.uncp.edu

SOCSEC-L (Dutch List)  
Post Address: socsec-l@knoware.nl

Listmanager: nadtdanielgrp.com

EMPATHY (Interpersonal & Small Group  
Communication)  
Post Address: empathy@uga.cc.uga.edu  
Subscribe command: sub empathy [firstname]  
[lastname]  
Send command to: listserv@uga.cc.uga.edu

HEALTHCARE (Healthcare Reform)  
Post Address: healthre@lsv.uky.edu  
Subscribe command: sub healthre  
Send command to:  
listserv@lsv.uky.edu

HOMELESS (Homelessness Discussion  
Group)  
Post Address: homeless@csf.colorado.edu  
Subscribe command: subscribe homeless [your  
name]  
Send command to: listproc@csf.colorado.edu

Send command to: listserv@listserver.rit.edu  
Listmanager: mlsgsw@osfmail.isc.rit.edu

CLINICALSW (For Clinical Social Workers)  
Post Address:  
Subscribe command: Go to the webpage  
Send command to:  
<http://www.onelist.com/subscribe.cgi/clinicalsw>

CSOCWORK (Canadian Social Work)  
Post Address: csocwork@pdomain.uwindor.ca  
Subscribe command: subscribe csocwork  
Send command to: listserv@pdomain.uwindor.ca

DNET (Dignity Net)  
Post Address:  
Subscribe command: subscribe dnet [your name]  
Send command to:  
majordomo@laplaza.taos.nm.us

DeltaSWC-L (Lower Mississippi River Delta  
Social Work Consortium)  
Post Address: deltaswc-l@siu.edu  
Subscribe command: subscribe deltaswc-l  
Send command to: listserv@siu.edu  
Listmanager: mbtracy@siu.edu

FEMISA (Discussion on Feminism and  
Related Topics)  
Post Address: femisa@csf.colorado.edu  
Subscribe command: subscribe femisa [list] [Your  
Name]  
Send command to: listproc@csf.colorado.edu

Family Science Network

Subscribe command: subscribe socsec-l  
Send command to: majordomo@knoware.nl

SOCWORK-FLA (Social Workers of Florida)  
Post Address: socwork-fla@martin.barry.edu  
Subscribe command: sub socwork-fla [firstname]  
[lastname]  
Send command to: listproc@martin.barry.edu

STOPRAPE (Stop Rape Network)  
Post Address: stoprape@brownvm.brown.edu  
Subscribe command: subscribe stoprape  
Send command to: listserv@brownvm.brown.edu

SW-FIELDWORK (Field Education)  
Post Address: sw-fieldwork@nmsu.edu  
Subscribe command: subscribe sw-fieldwork [your  
name]  
Send command to: listserv@nmsu.edu

SWCO (Social Workers of Colorado)  
Post Address: suinn@lamar.colostate.edu  
Subscribe command: subscribe swco [your name]  
Send command to: listserv@colostate.edu

NYSOCWORK (New York State Social  
Workers)  
Post Address: nysocwork@listserver.rit.edu  
Subscribe command: sub nysocwork lastname  
firstname  
Send command to: listserv@listserver.rit.edu  
Listmanager: mlsgsw@osfmail.isc.rit.edu

OCD-L (Obsessive Compulsive Disorder  
List)  
Post Address: ocd-l@vm.marist.edu  
Subscribe command: subscribe ocd-l  
Send command to: listserv@vm.marist.edu  
SOCTECH Listserv  
Post Address: soctech@uafsysb.uark.edu  
Subscribe command: subscribe soctech [your  
name]  
Send command to: listserv@uafsysb.uark.edu

SWPA-L (Social Workers of Pennsylvania)  
Post Address: swpa-l@brynmawr.edu  
Subscribe command: subscribe swpa-l  
Send command to: majordomo@brynmawr.edu

Child Welfare  
This is a broadly focused list for people in any way  
involved in the child welfare community to gather  
and discuss anything they want.  
majordomo@ListService.net - 17 Sep 1998 - TKS

Entitlements  
Entitlements is a moderated mailing list  
that posts updates and news on federally funded

Post Address: famlysci@lsv.uky.edu  
Subscribe command: subscribe FAMILYSCI  
[firstname] [lastname]  
Send command to: listserv@lsv.uky.edu

HUSITA-L (Human Services Information  
Technology Association)  
Post Address: husita-l@cornell.edu  
Subscribe command: subscribe HUSITA-L  
[firstname] [lastname]  
Send command to: listserv@cornell.edu

Homeless Discussion Groups  
Post Address: ihomeless@csf.colorado.edu  
Subscribe command: subscribe homeless Cheryl  
Send command to: listproc@csf.colorado.edu

Mental Health Networker  
Post Address:  
world-mentalhealth-networker-list@peak.org  
Subscribe command: subscribe  
world-mentalhealth-networker-list [first name]  
Send command to:  
majordomo@maillist.peak.org  
Listmanager: jas@cybernex.net

Mental Health Networker  
Post Address:  
world-mentalhealth-networker-list@peak.org  
Subscribe command: subscribe  
world-mentalhealth-networker-listjulie  
Send command to:  
majordomo@maillist.peak.org  
Listmanager: jas@cybernex.net

NMSOCWORK (New Mexico List of Social  
Workers)  
Post Address: nmsocwork@nmsu.edu  
Subscribe command: subscribe nmsocwork [your  
name]  
Send command to: listserv@nmsu.edu

NSMNET (The New Social Movement  
Network List)  
Post Address: nsmnet@washington.edu  
Subscribe command: subscribe nsmnet [your  
name]  
Send command to: listproc@washington.edu

NYCHIWEL (New York Child Welfare)  
Post Address: nychiwel@nysernet.org  
Subscribe command: subscribe nychiwel  
Send command to: listserv@nysernet.org

SOCWORK (The General Social Work  
Discussion Listserv)

benefits like Social Security, Medicare and Medicaid, as well as New York State programs such as Food Stamps. It is intended for use by social workers and other advocates.

listserv@assist-net.com - 16 Jun 1998 - TKS

#### Social Work

SCIOFSLW is a mailing list dedicated to the discussion and sharing of resources related to the philosophy and science of social work. The purpose of this service is to produce a (cyber) space through which social work can advance as it moves into the 21st Century; as a prestigious profession, and existing on an ever-growing foundation of knowledge built by and for social workers.

listproc@lists.vcu.edu - 17 Apr 1998 - TKS

#### Social Work

SOCWORK contains discussion among social workers both in academia and out in the field. Members typically talk about social programs currently in progress and ask advice to see how their peers would handle a given situation. As with many high-volume lists, flame wars occasionally develop. However, this is a forum recommended to all interested in social work, especially those individuals involved in the running of a shelter or crisis service organization.

listserv@uafsysb.uark.edu - 17 Apr 1998 - TKS

Post Address: socwork@uwrf.edu

Subscribe command: subscribe socwork

Send command to: majordomo@uwrf.edu

Listmanager: ogden.w.rogers@uwrf.edu

#### Sozialarbeit (German Mailing List of Social Workers)

Post Address: diskurs@forum.sozialarbeit.de

Subscribe command: subscribe diskurs

Send command to:

diskurs-request@forum.sozialarbeit.de

#### fieldwork

Post Address: sw-fieldwork@nmsu.edu

Subscribe command: sw-fieldworkdehiggins

Send command to: listserv@nmsu.edu

## APPENDIX III

### PROFESSIONAL ORGANIZATIONS and CENTERS

#### American Association of State Social Work Boards

The American Association of State Social Work Boards (AASSWB) is the association of state bodies that regulate social work. Their Web site provides information about licence requirements in each state as well as licence exams themselves. Social Work conferences are listed, and a news bulletin section provides related current events.

<URL: <http://www.aasswb.org/> - 27 Jul 1998 - LMT >

#### American Board of Examiners

ABE also offers information services (printed and on-line directories) used as reference/referral sources by the profession and the healthcare industry. These services contain information about the education, training, and experience. Committed to setting and upholding national practice standards.

<URL: <http://www.abecsw.org/> - 17 May 1998 - VBH >

#### Center for Social Services Research University of California, Berkeley

The Center for Social Services Research conducts research, policy analysis, program planning and evaluation toward the improvement of the publicly supported social services. The site provides current research of the Center, including family welfare, aging, and mental health. A rather plain site, but updated frequently.

<URL: <http://hav54.socwel.berkeley.edu/cssr/> - 13 Mar 1998 - TKS >

#### Clinical Social Work Federation

A confederation of 31 state societies for clinical social work. These state societies are formed as voluntary associations for the purpose of promoting the highest standards of professional education and clinical practice. Aside from membership information, this site includes legislative alerts, events, publications, and a chat. An informative site!

<URL: <http://www.cswf.org/> - 30 Mar 1998 - TKS >

#### Council on Social Work Education

This site provides a calendar of events, announcements, ordering information publications within this field, and links to other sites related to social work. Although navigation is easy, the site lacks useful content.

<URL: <http://www.cswe.org/> - 10 May 1998 - VBH >

#### Gay, Lesbian, Bisexual, Transgender Caucus Boston University School of Social Work

The Gay, Lesbian, Bisexual, Transgender Caucus is one of several caucuses of the Boston University School of Social Work Student Organization. The caucus provides support and resources to gay, lesbian, bisexual, and transgender social work students, as well as a forum for discussion related to GLBT issues, particularly in the field of social work. The site provides information about caucus meetings and events and lots of GLBT and social work links.

<URL: <http://www.geocities.com/WestHollywood/Heights/4168/> - 24 Jul 1998 - TKS >

#### George Warren Brown School of Social Work

A comprehensive overview of this graduate school is provided here. An extensive listing of online resources for social workers and those in the social services fields is also included.

<URL: <http://gwbweb.wustl.edu/> - 18 Sep 1998 - KCB >

#### International Association of Psychosocial Rehabilitation Services Ruth Hughes, RPRP, CEO

Homepage for the International Association of Psychosocial Rehabilitation Services

<URL: <http://www.iapsrs.org/> - 24 Sep 1999 - MJD Readers Choice? Yes | No >

#### International Federation of Social Workers

Here you will find everything you need to know to connect to the International Federation of Social Workers (IFSW) network. This site provides membership information, publications, an events calendar, and contacts.

<URL: <http://www.ifsw.org/> - 31 Aug 1998 - TKS >

#### The Irish Association of Social Workers

Provides an overview of the Association including a directory of national executives and representatives, an outline of their code of ethics, news, and a listing of publications featuring editorials from The Irish Social Worker. Frequently updated.

<URL: <http://homepages.iol.ie/~iasw/> - 18 Jun 1998 - TKS >

#### Murray Research Center Radcliffe College

The Henry A. Murray Research Center of Radcliffe College is a center for research on the changing lives of American women. The center's primary purpose is to promote the use of existing social science data to explore human development and social change. This site includes information for both students and non-students. Loading time was slow.

<URL: <http://www.radcliffe.edu/murray/> - 10 May 1998 - SMF >

#### National Association of Social Workers

The National Association of Social Workers (NASW) serves nearly 155,000 social workers in 55 chapters throughout the United States, Puerto Rico, the Virgin Islands, and abroad. It serves members and advocates for sound, social policy. This site contains points of interest for social workers including policy, information on managed care, and advocacy.

<URL: <http://www.socialworkers.org/> - 15 Feb 1999 - TKS >

#### The Society for the Psychological Study of Social Issues

The Society disseminates significant findings of research through its publications program and the Journal of Social Issues (JSI). First-year trial membership is \$12.00 (\$10.00 for students) and includes a subscription to JSI, the SPSSI Newsletter, and a discount on SPSSI-sponsored books. SPSSI maintains an electronic discussion list welcoming both members and non-members.

<URL: <http://www.umich.edu/~sociss/> - 1 Oct 1997 - JMG >

#### Society for the Study of Social Problems

The Society for the Study of Social Problems (SSSP) promotes research and dialogue through presentations at the Annual Meeting; publications in Social Problems; awards to community groups; committee participation; consultation; and the generation of new ideas. Student members and newcomers are especially welcome. Dues and contributions to the Society are tax deductible (to the extent permitted by law). Memberships are available to individuals and departments of colleges and universities.

<URL: <http://funnelweb.utcc.utk.edu/~sssp/> - 3 Dec 1997 - TKS >

