

Converting Access / Excel Database to Winisis

K Rajasekharan* & K M Nafala**

Abstract

The basic objective of this manual is to help the conversion of Access /Excel database into Winisis. All essential steps are provided with screenshots. The web address of the location of the conversion software db3iso is also provided as footnotes.

Objective

The purpose of this article is to help you to convert an Access/Excel database (.xls) in to Winisis (.iso) with **db3iso**¹ software. **db3iso** is a free software tool used for this purpose.

Converting Access database to Excel

If the original database is an *Access* database (.mdb), it need to be converted into *Excel* database which can be further converted into Winisis database. Access database can be converted into Excel by normal export/import process. Then the Excel database needs to be converted to Winisis database.

Excel to Winisis

The sample Excel database used here to show the conversion from Excel to Winisis, contains the following fields

Name of GP
Post Office
Block
District
Pincode

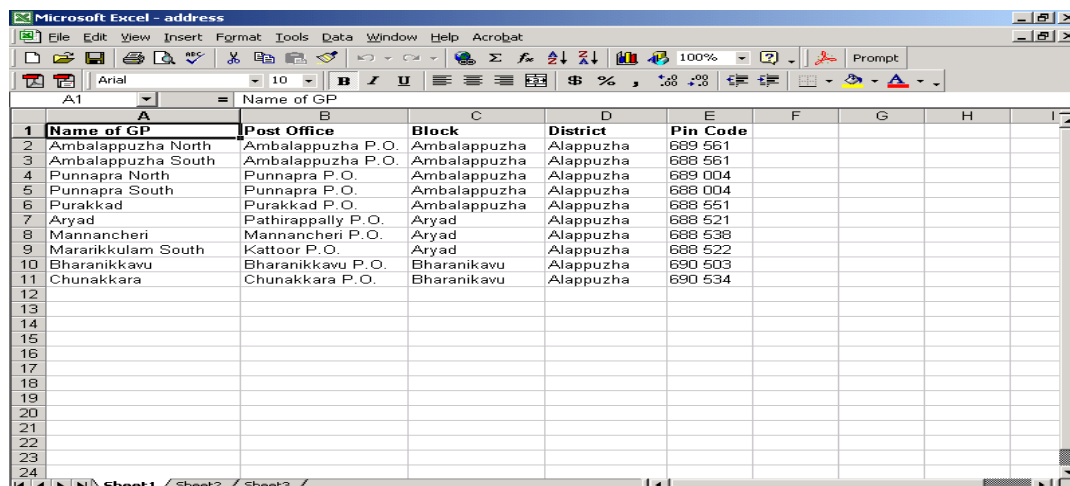
The *Excel* database with **.xls** extension needs to be converted into **.dbf** format by saving it as **dBaseIII** file. Open the *Excel* database as follows: -

* Librarian, Kerala Institute of Local Administration, Mulagunnathukavu – 680 581

** Library Computer Operator, Kerala Institute of Local Administration, Mulagunnathukavu, Thrissur

¹ **Db3iso** is available at <http://library.wur.nl/isis/db3iso.com>

Figure 1 Open the Excel Database



	A	B	C	D	E	F	G	H	I
	Name of GP	Post Office	Block	District	Pin Code				
2	Ambalappuzha North	Ambalappuzha P.O.	Ambalappuzha	Alappuzha	689 561				
3	Ambalappuzha South	Ambalappuzha P.O.	Ambalappuzha	Alappuzha	688 561				
4	Punnappa North	Punnappa P.O.	Ambalappuzha	Alappuzha	689 004				
5	Punnappa South	Punnappa P.O.	Ambalappuzha	Alappuzha	688 004				
6	Purakkad	Purakkad P.O.	Ambalappuzha	Alappuzha	688 551				
7	Aryad	Pathirappally P.O.	Aryad	Alappuzha	688 521				
8	Mannancheri	Mannancheri P.O.	Aryad	Alappuzha	688 538				
9	Maranikkulam South	Kattoor P.O.	Aryad	Alappuzha	688 522				
10	Bharanikkavu	Bharanikkavu P.O.	Bharanikkavu	Alappuzha	690 503				
11	Chunakkara	Chunakkara P.O.	Bharanikkavu	Alappuzha	690 534				

Save as Excel database as dBaseIII file. (File ⇒ Save As)

Figure 2

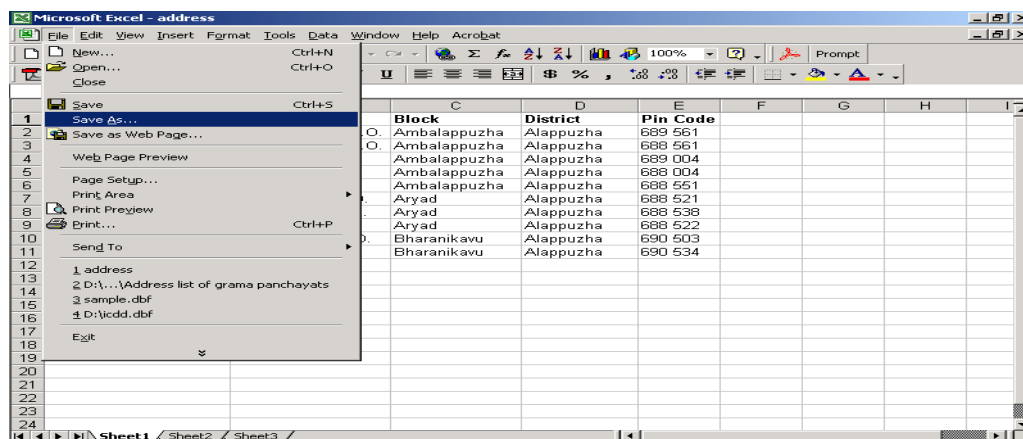
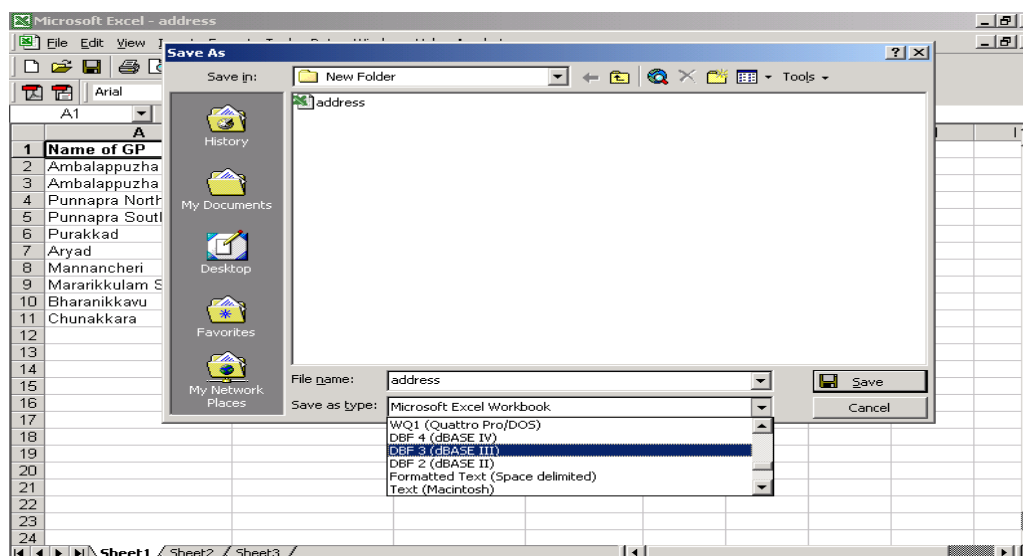


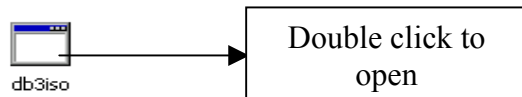
Figure 3



In the above screen select *Save as type* as *DBF 3(dBASE III)*, give a name to the saved file and click the **Save** button. Then you will get .dbf file in the selected location.

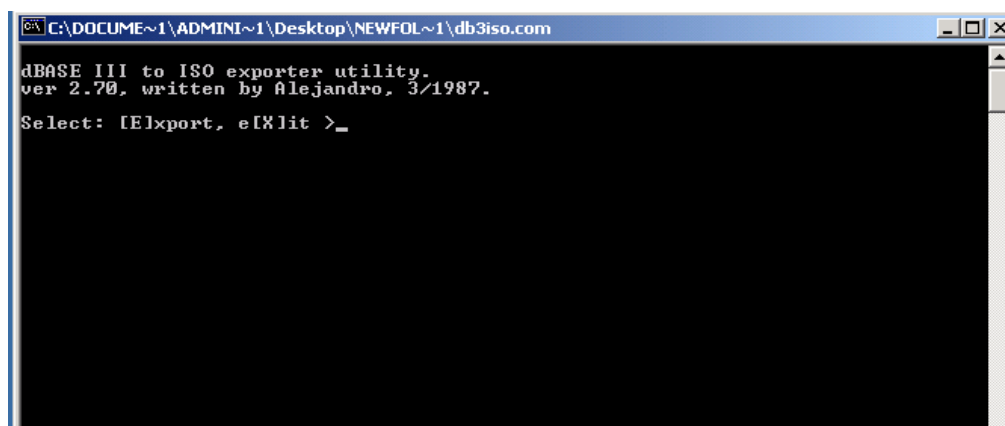
After converting Excel into *dBaseIII* format, convert it into .iso format by using **db3iso** programme. The downloaded file would look as follows: -

Double click the program to open the **db3iso** programme.



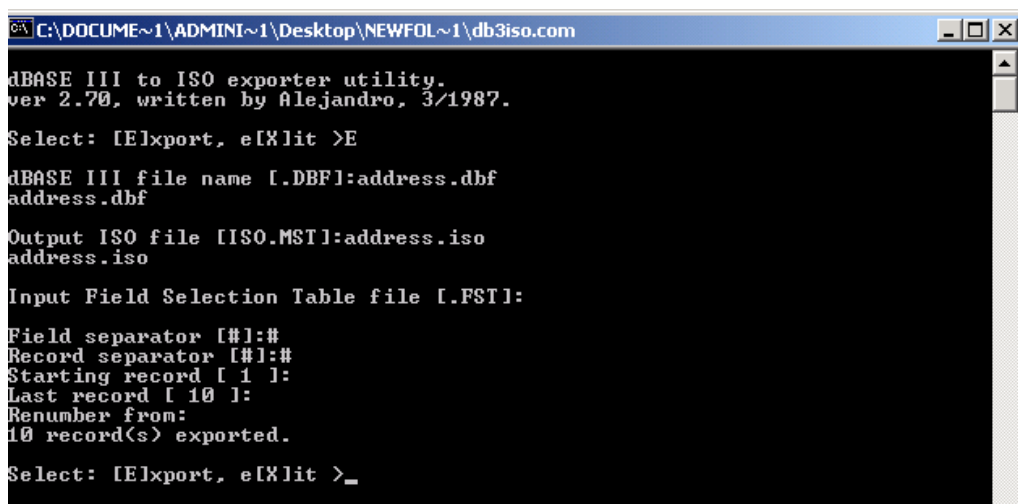
Then the following screen would appear: -

Figure 4 Open the db3iso Programme



Now select **E** for Export to **dbf** file and you will get the following window.

Figure 5



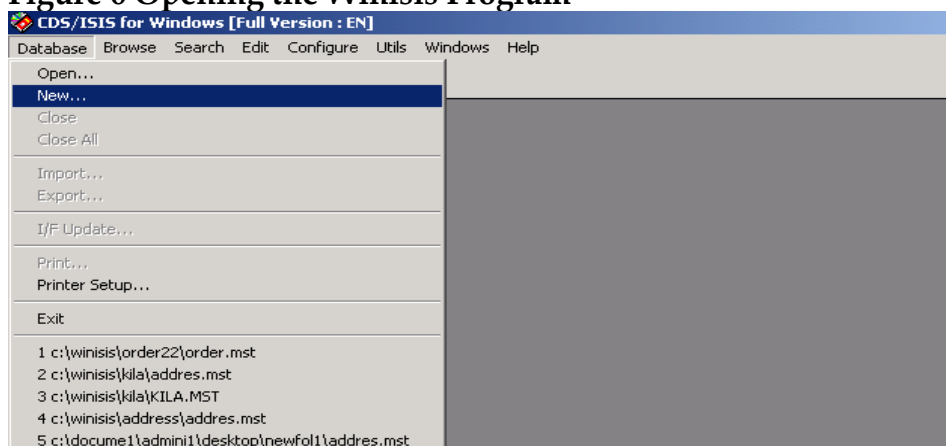
Then provide the *dBase III* name (address.dbf), output *.iso* file name (address.iso) and press Enter, when the records will be exported. When the export is completed, type X to close the window.

When the database conversion is over, create a new Winisis database exactly with following fields: -

- Name of GP
- Post Office
- Block
- District
- Pincode

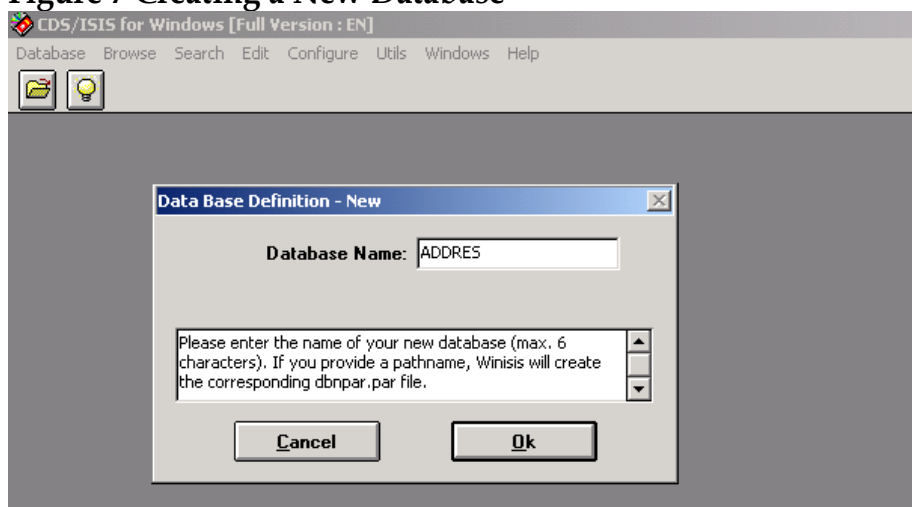
To create the Winisis database, open the Winisis programme as follows.

Figure 6 Opening the Winisis Program



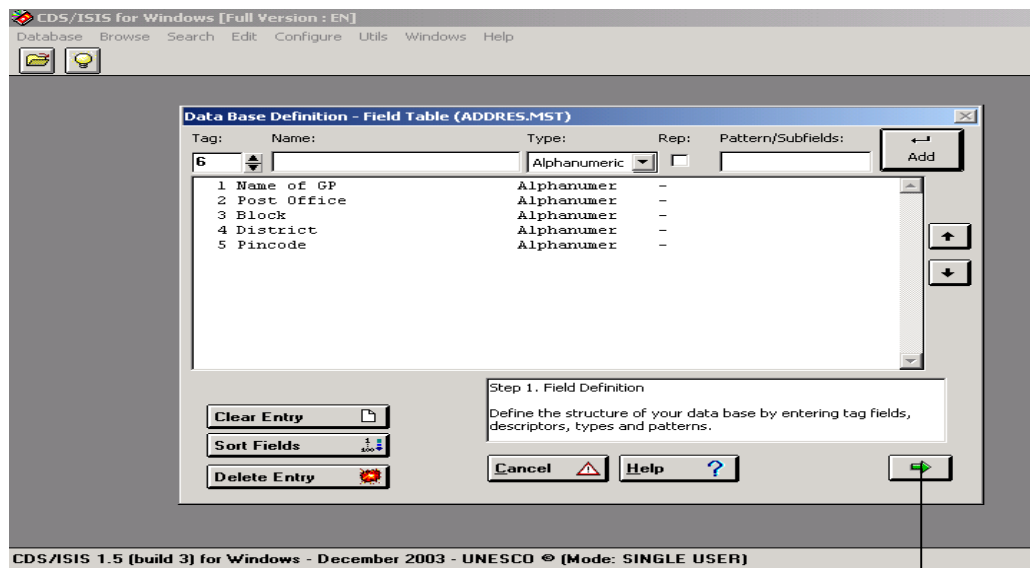
To create a new database, click **Database** ⇒ **New**.

Figure 7 Creating a New Database



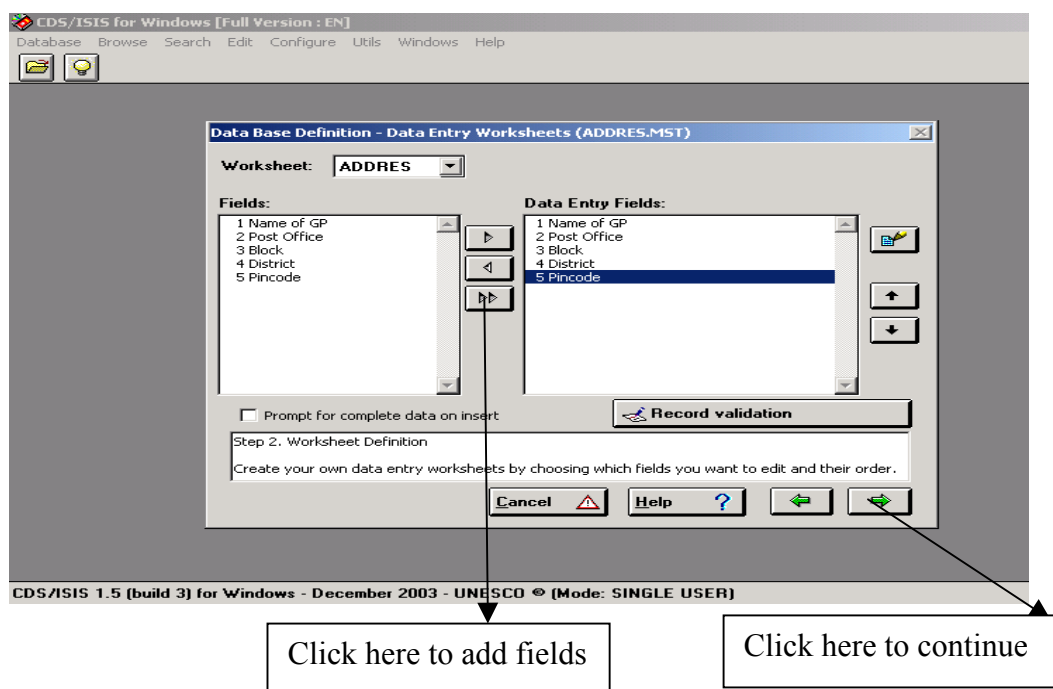
Give a name to the database (addres), and click **Ok** button.

Figure 8



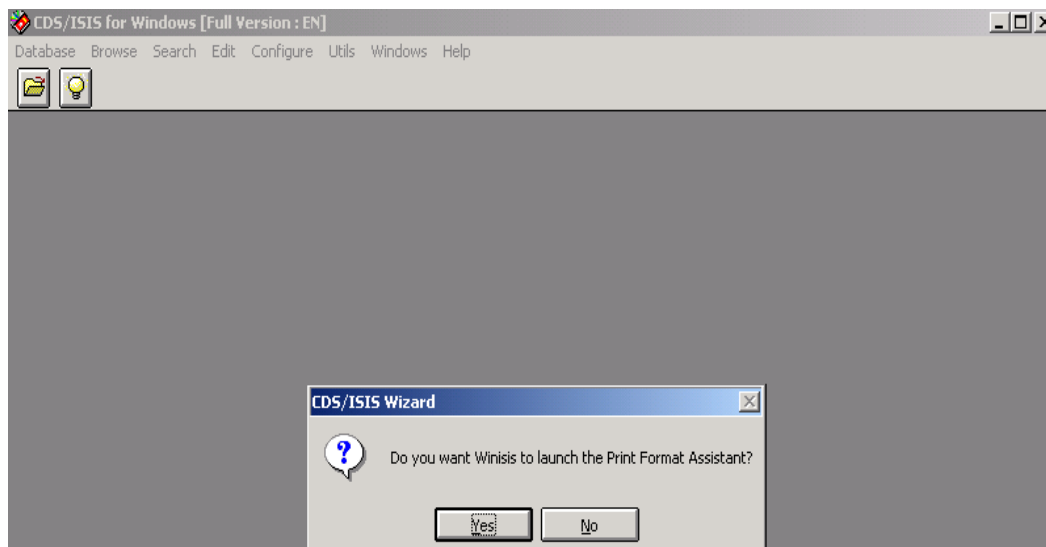
Enter your Tag number of field, Name of field and click the **Add** button. Add all fields one by one as above. Then click on the **Green Arrow** button and you will get the following screen.

Figure 9 Selecting the Fields for Data Entry



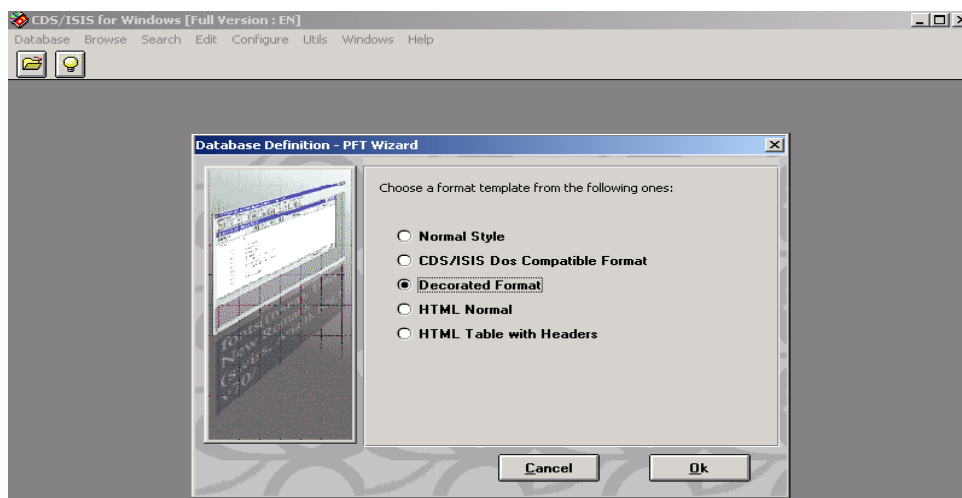
Click **Green Arrow** button.

Figure 10



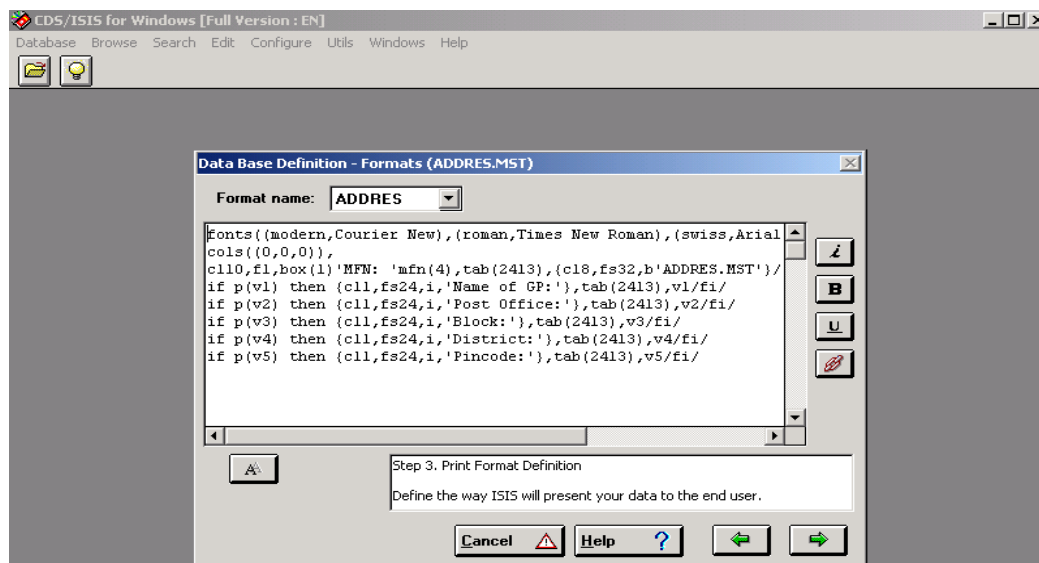
Click **Yes** to launch print format assistant.

Figure 11



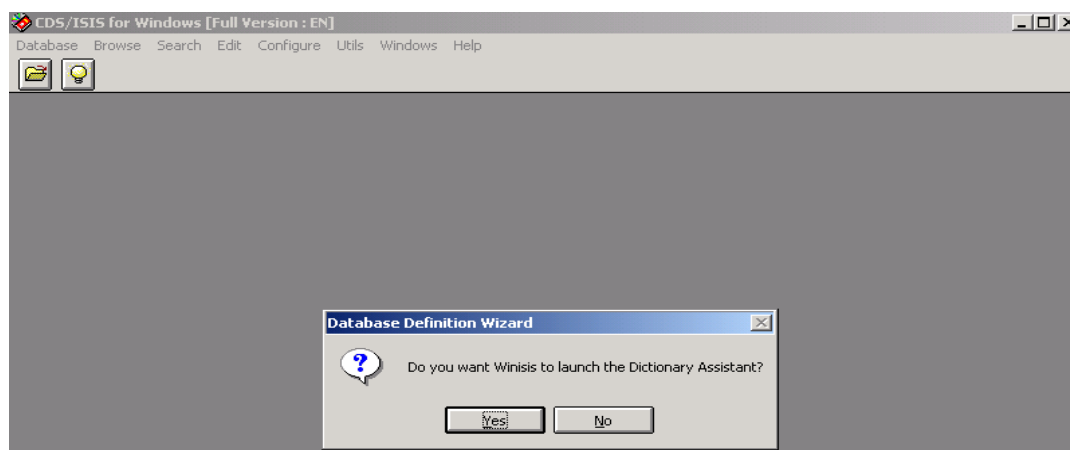
Select an appropriate print format and click **Ok** button.

Figure 12 Print Format



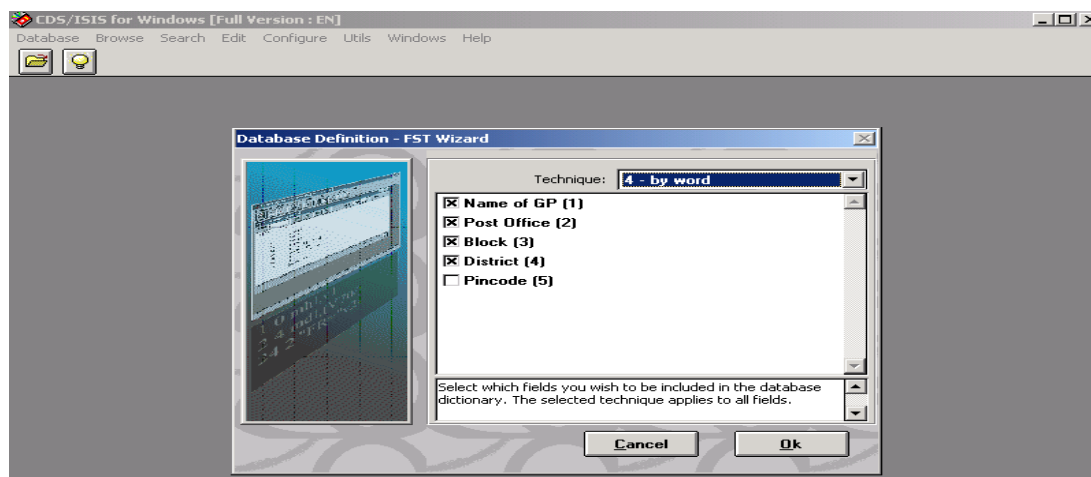
Click on the **Green Arrow** button.

Figure 13



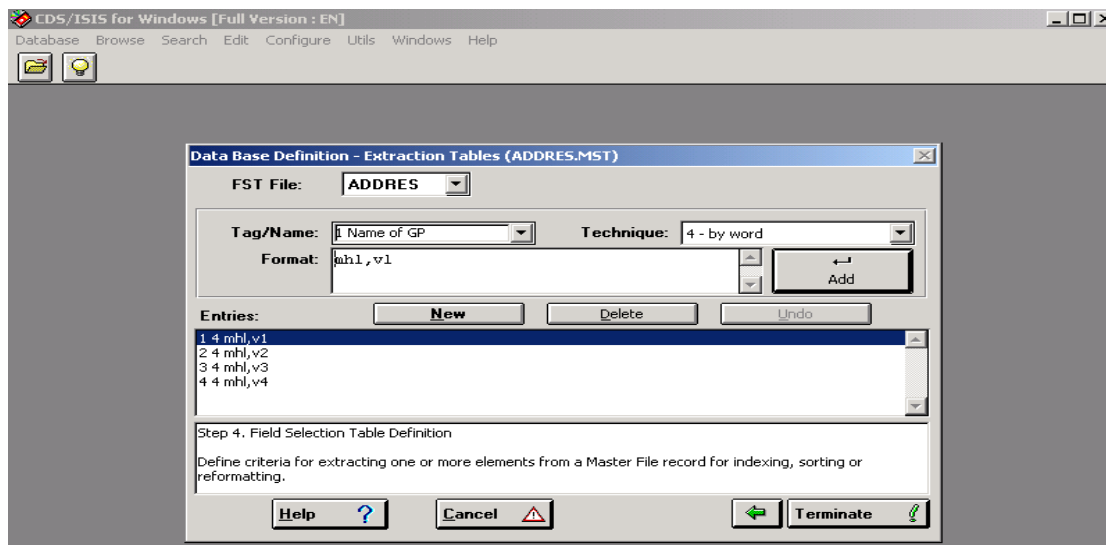
Click **Yes** to launch dictionary assistant.

Figure 14 Selecting the Indexing Technique



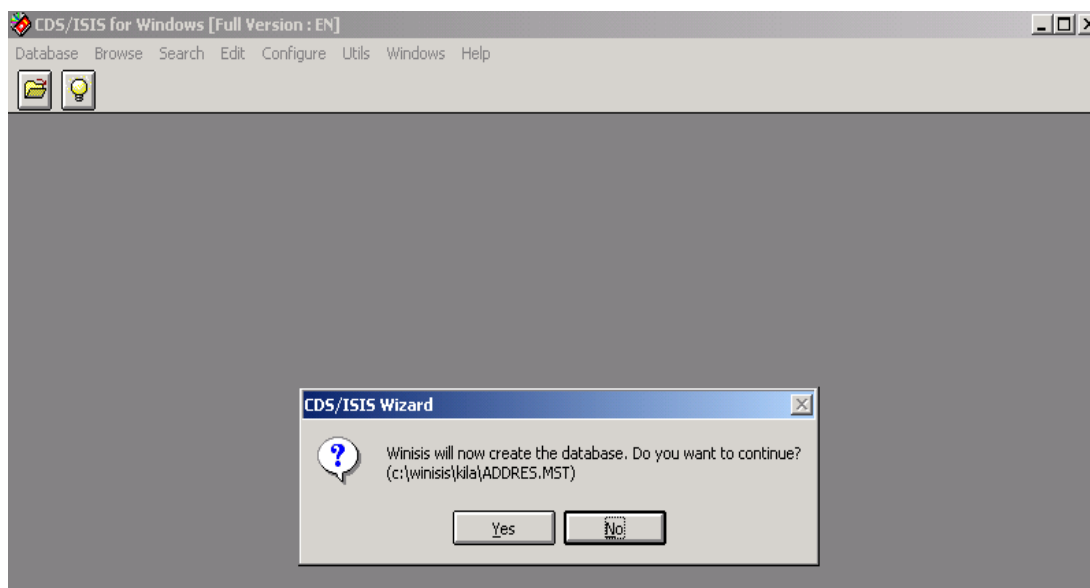
Select the fields, which you want to add dictionary and choose the Technique as **4-byword** and click **Ok** button.

Figure 15



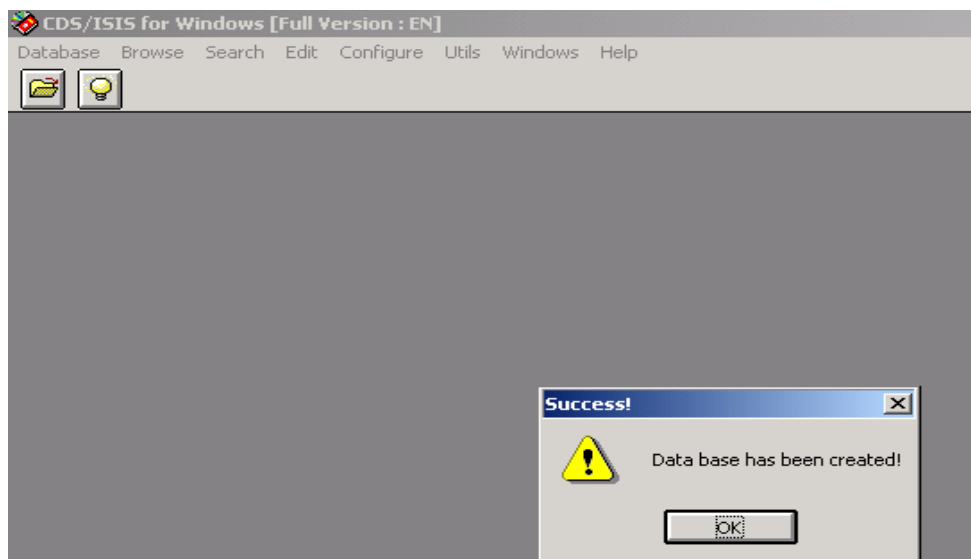
Click the **Terminate** button.

Figure 16



Click **Yes** to continue.

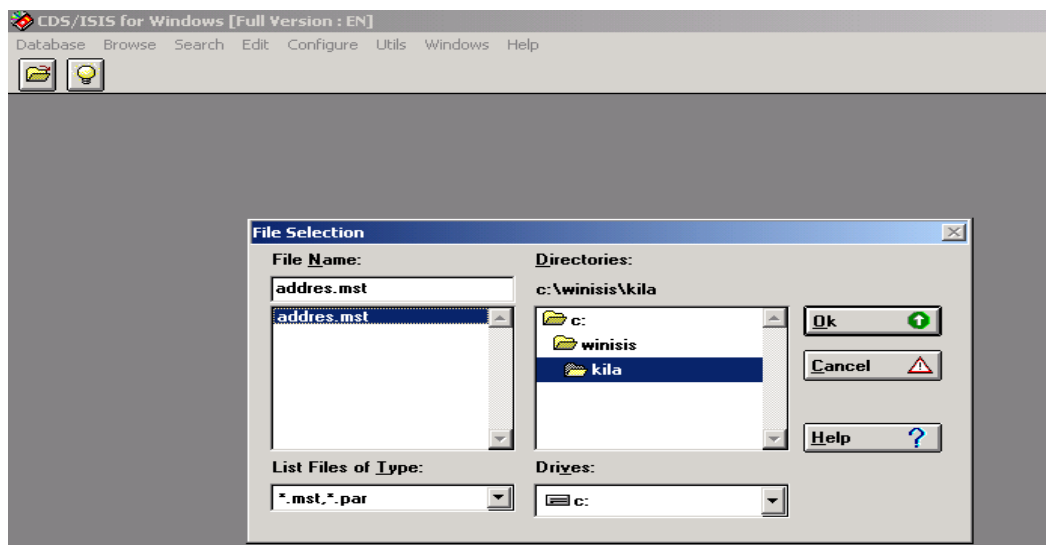
Fig Database Creation is Completed



Click **Ok** button.

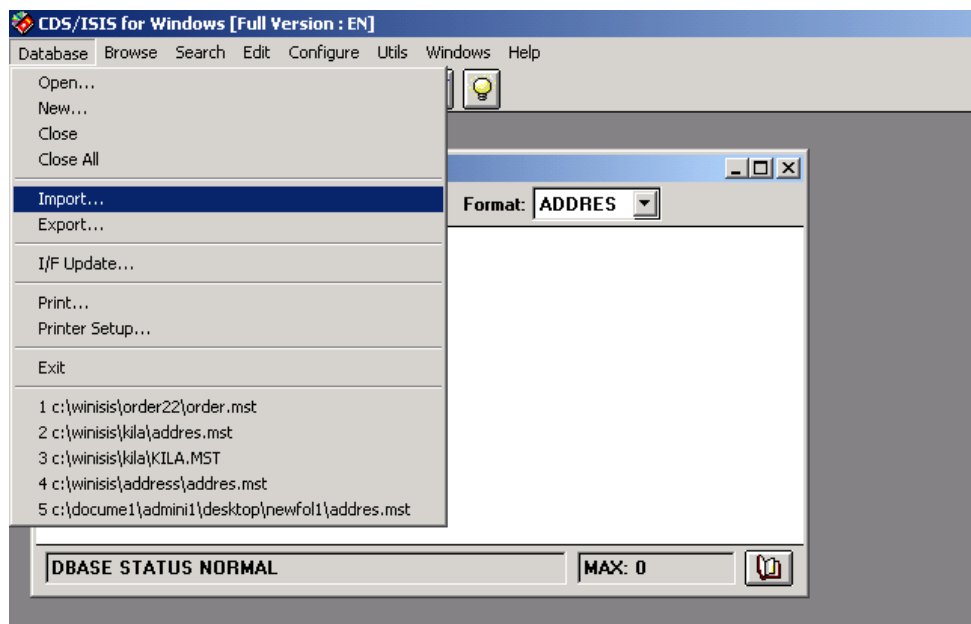
When the database creation is over, open the **.mst** file as follows: -

Figure 17 Open the Database



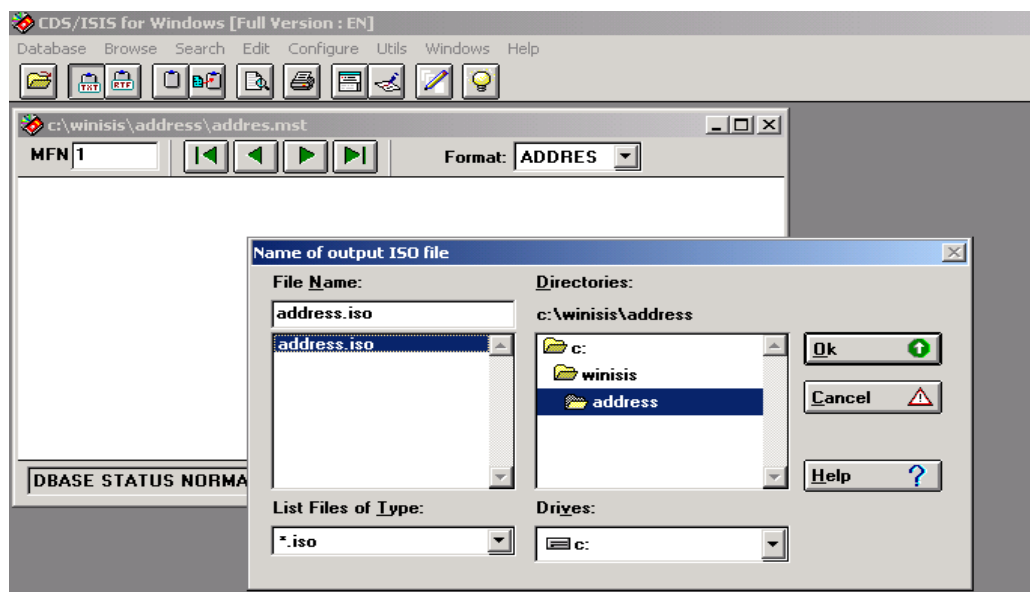
Select the **.mst** (address.mst) file and click **Ok** button.

Figure 18



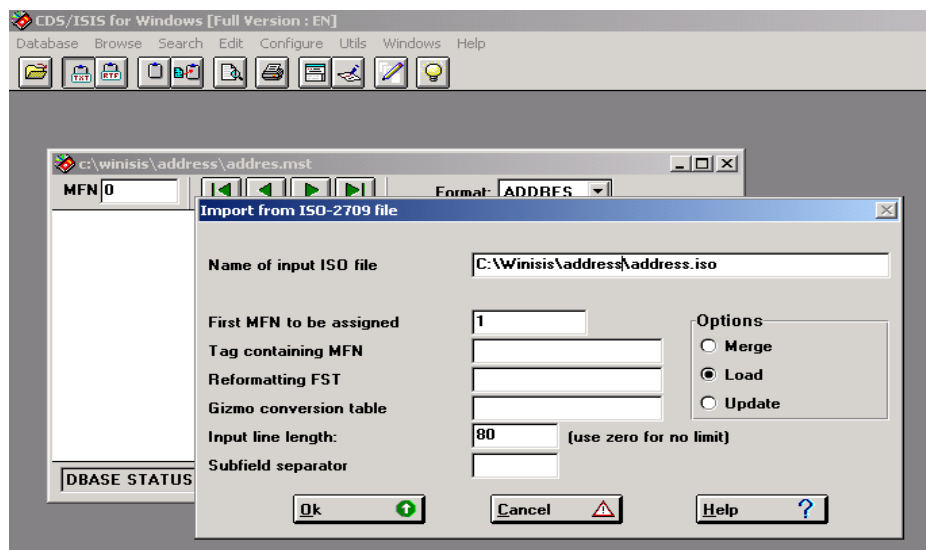
To import the .iso file into Winisis, click **Database** ⇒ **Import** as in the above screen.

Figure 19 Select the .iso file to Import



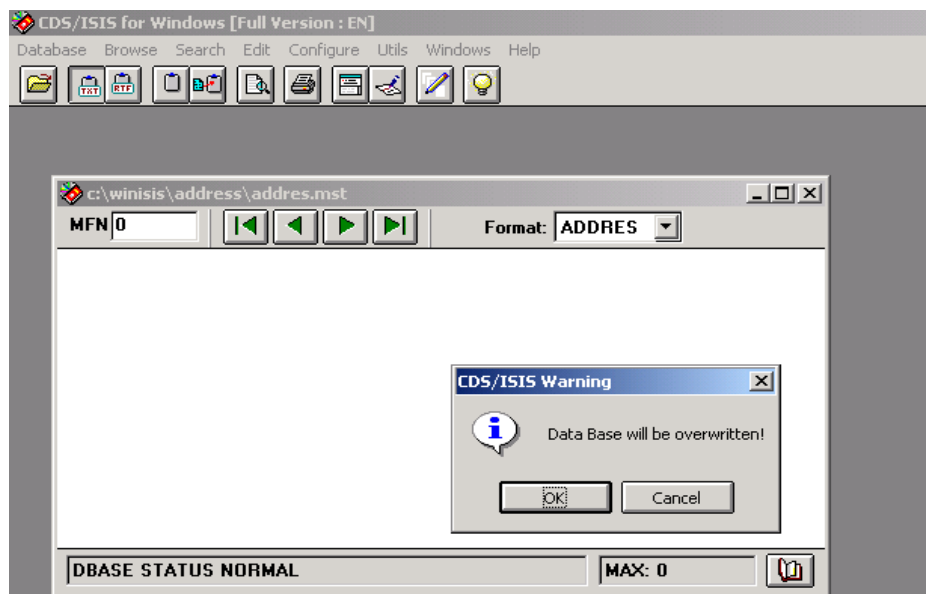
Select the .iso (address.iso) file and click **Ok** button, you will get the following screen.

Figure 20



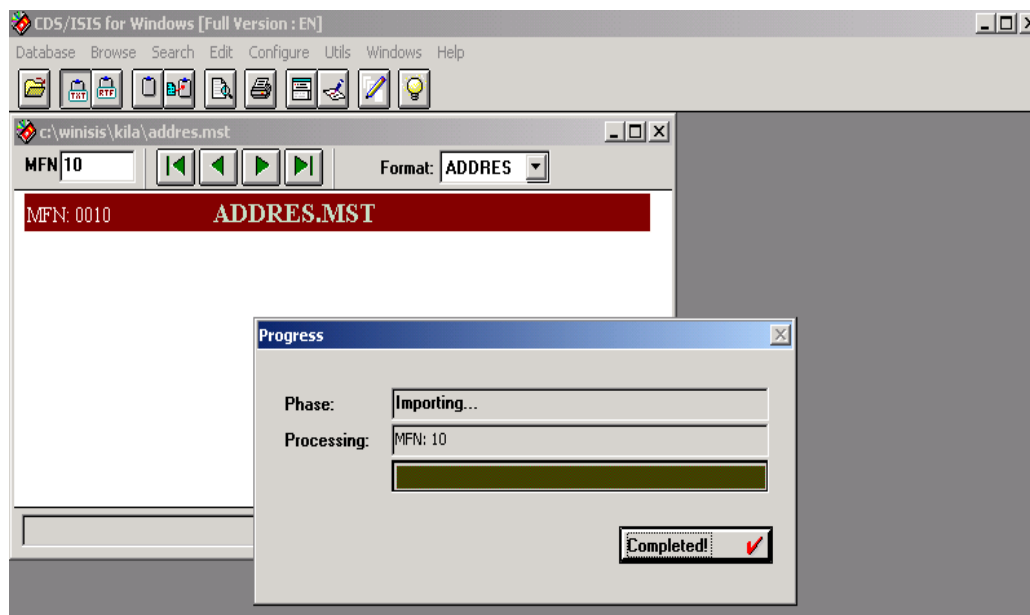
Select the **Load** option and click **Ok** button.

Figure 21 Asking for overwriting the database



Click on the **OK** button

Figure 22 Import Completed



When the import process is completed, click the **Completed** button. The converted data will appear in Winisis as follows.

Figure 23 The Converted data

