

Blinded me with science	Lucky Numbers	Video killed the radio star	Show me the money	ID10T Error	Potpourri
<u>100</u>	<u>100</u>	<u>100</u>	<u>100</u>	<u>100</u>	<u>100</u>
<u>200</u>	<u>200</u>	<u>200</u>	<u>200</u>	<u>200</u>	<u>200</u>
<u>300</u>	<u>300</u>	<u>300</u>	<u>300</u>	<u>300</u>	<u>300</u>
<u>400</u>	<u>400</u>	<u>400</u>	<u>400</u>	<u>400</u>	<u>400</u>



Electrons are smaller than atoms .

- A. True
- B. False



Dewey Double

All radioactivity is man-made .

- A. True
- B. False



Antibiotics kill viruses as well as bacteria .

- A. True
- B. False



A doctor tells a couple that their genetic makeup means that they've got one in four chances of having a child with an inherited illness. Does this mean that if their first child has the illness, the next three will not?

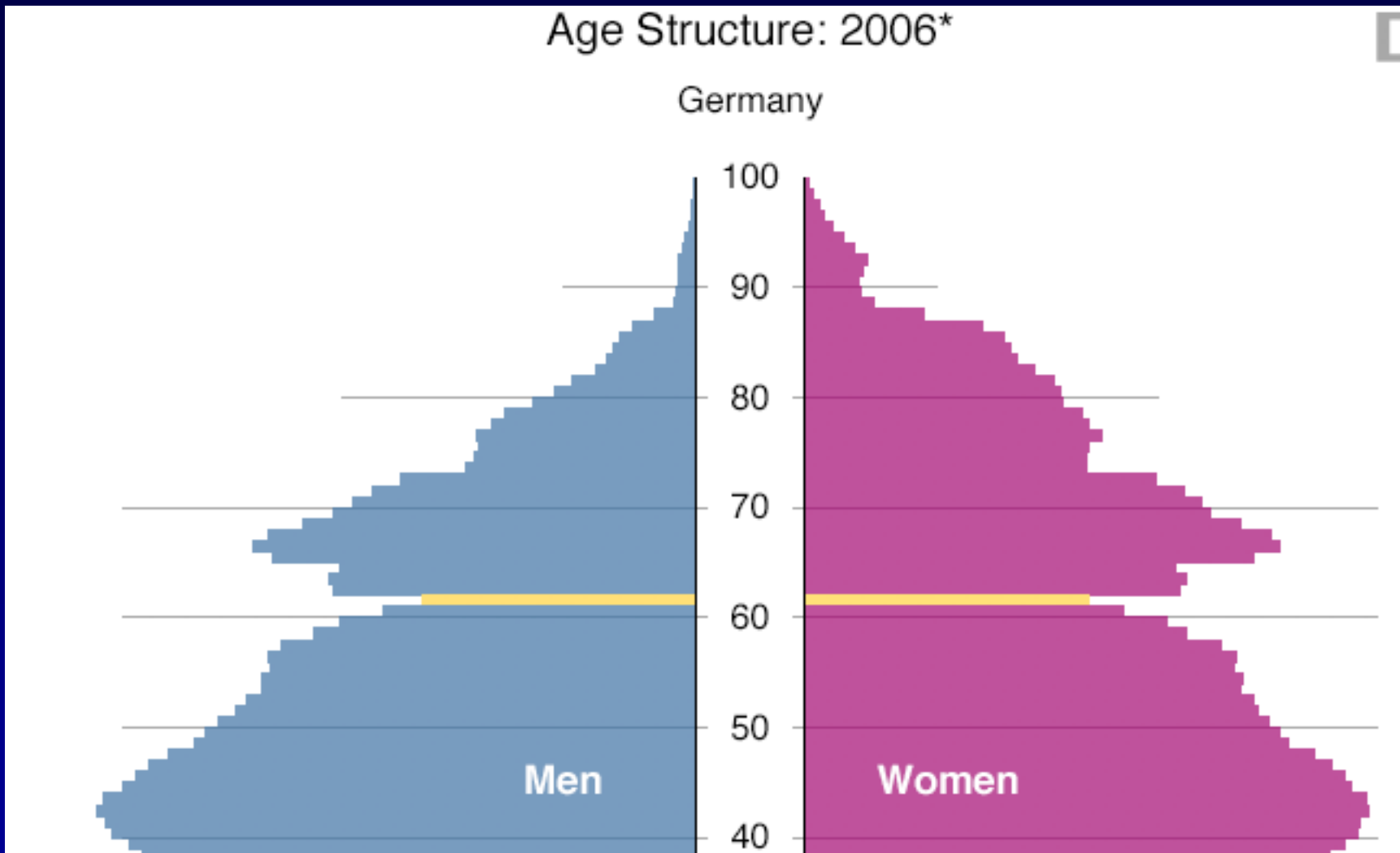
- A. Yes
- B. No



The number in the top portion
of a fraction is the:

- A. Numerator
- B. Denominator
- C. Dividend
- D. Quotient





- A. True
- B. False



College Students			
MAJOR	Male	Female	TOTAL
Business	30%	10%	40%
Economics	5%	25%	30%
MIS	15%	15%	30%
TOTAL	50%	50%	100%

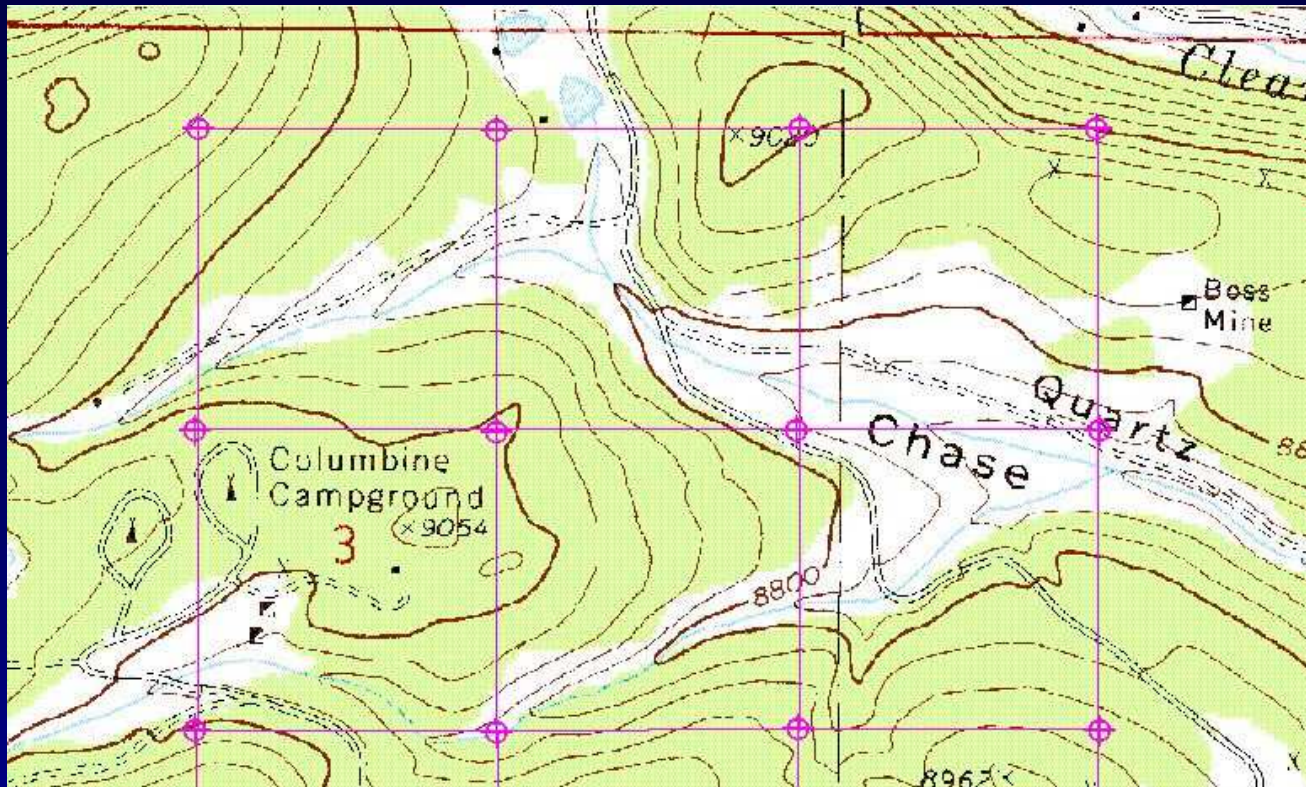
- A. 30% of male college students are business majors
- B. 30% of college business majors are males
- C. 30% of college students are male business majors
- D. 30% of male business majors are college students



If a sample refers to the individuals or organizations selected to represent the population, there is no sampling error in a census.

- A. True
- B. False





- A. Roads
- B. Rivers
- C. Elevation
- D. Bike Trails

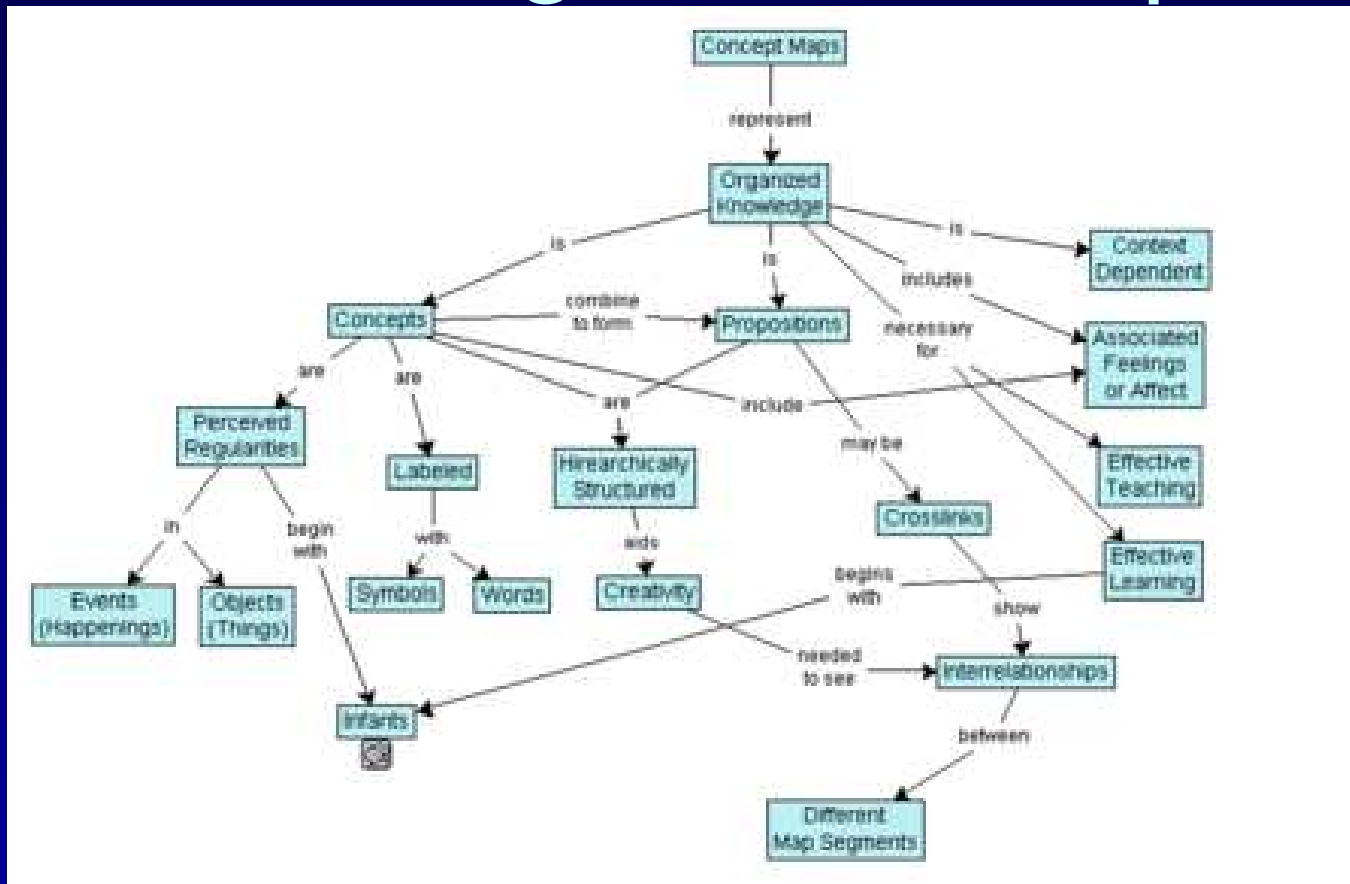


If three maps were on the same size sheet of paper, which would show the least amount of detail?

- A. 1: 4,000
- B. 1: 40,000
- C. 1: 400,000
- D. 1: 4,000,000



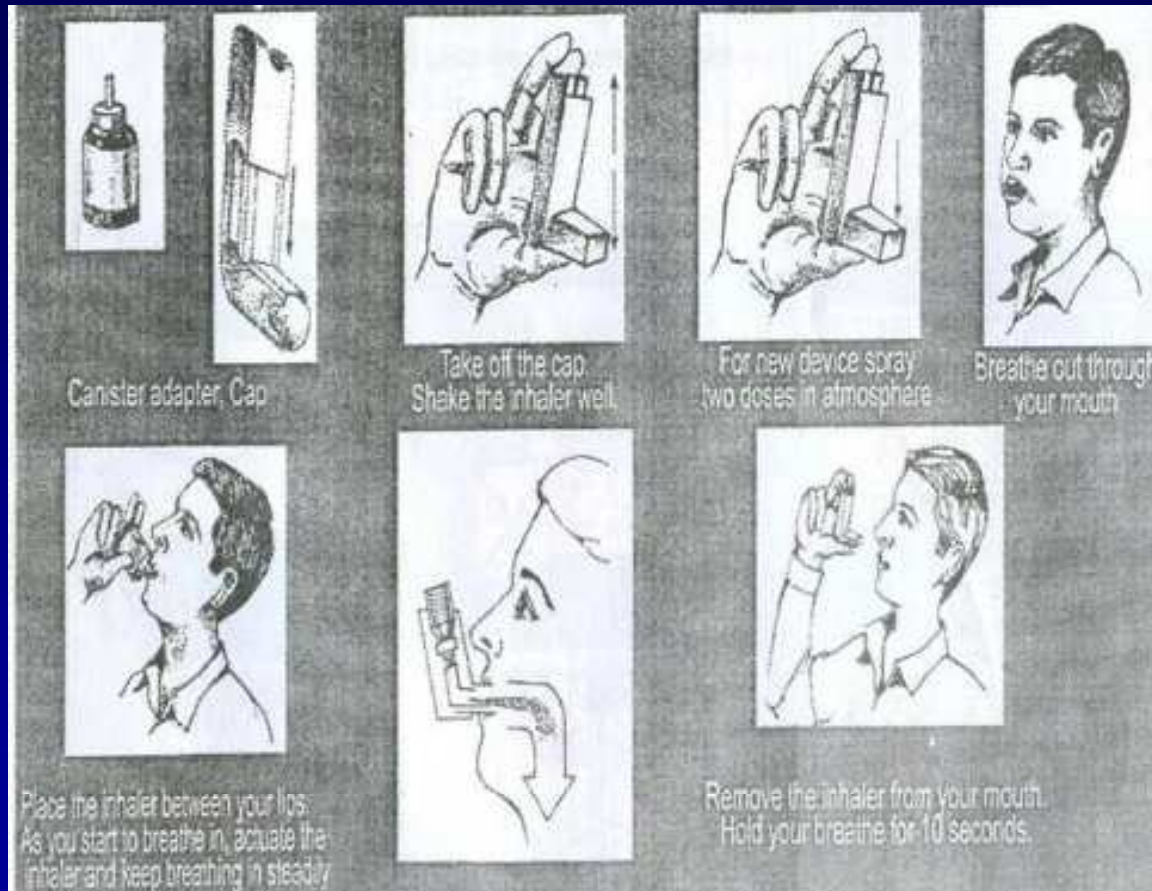
The following is a concept map.



- A. True
- B. False



The following is a/an:



- A. Pictogram
- B. Ideogram
- C. Concept Map



Which one of the following statements about the function of money is incorrect?

- A. Money makes it easier to save.
- B. Money makes trading goods and services easier.
- C. Money holds its value well in times of inflation.



When the federal government's expenditures for a year are greater than its revenue for that year, the difference is known as:

- A. The national debt.
- B. A budget deficit
- C. A budget surplus.



Which of the following are most likely to be helped by inflation?

- A. People living on a fixed income.
- B. Banks that loaned money at a fixed rate of interest.
- C. People who borrowed money at a fixed rate of interest.
- D. None of the above.



Gross national product includes the income of those residents earned by corporations owned overseas and from working abroad.

- A. True
- B. False



When emailing, what does BCC stand for?

- A. Bi-carbon copy
- B. Blind carbon copy
- C. Basic Character Coding
- D. British Columbia Columbia



The most popular open source license, used by the Linux kernel.

- A. GPL
- B. BSD
- C. MPL
- D. Microsoft Shared Source License
- E. APL



Yahoo's image site that lets you publish under and search by Creative Commons licenses

- A. Flickr
- B. Shutterfly
- C. Picasa
- D. Wikimedia Commons
- E. Photobucket



Which screen resolution
produces the largest text and
icons?

- A. 640x480
- B. 800x600
- C. 1024x768



Who did Shawn not vote for in
the last US election?

- A. Dubya
- B. Kerry



Dewey Double

How old is the average video game player?

- A. 13
- B. 23
- C. 33
- D. 43



What percentage of gamers are female?

A. 25%

B. 33%

C. 35%

D. 40%



Who's going to win the Stanley Cup?

- A. The Detroit Red Wings
- B. The Dallas Stars
- C. The Philadelphia Flyers
- D. The Pittsburgh Penguins

