



# ALPS LINK: A Repository of Learning Objects for Librarians

Gordon Coleman  
BC ELN Project Coordinator  
WILU 37 - May 15, 2008

# What is ALPS LINK?

- **L**ibrary **I**nstruction **K**napsack
- “A repository of learning objects to support academic librarians in their instructional role.”
- What are learning objects (LO)?
- Librarians can search for objects, download them, use and adapt them for their own classes



# Why a Learning Object repository?

- reduce duplication of effort
- better LO through building on the best practices of others
- professional development: exposure to a variety of teaching methods, approaches, styles

# LINK as a Website

LINK Community Portal

http://www.eln.bc.ca/irl/

BC ELN CBC News Facebook ConCan Wikipedia CML Google Docs Bloglines Weather

## ALPS LINK

**LINK: Library Instruction Knapsack**  
*A repository of learning objects to support academic librarians in their instructional role.*

**INFO FOR CONTRIBUTORS**

- > [Why Contribute?](#)
- > [LINK Contribution Instructions](#)
- > [SQL\\*R Guide for Contributors \(Word\)](#)
- > [Log into BCcampus or Create an Account](#)
- > [Templates for Learning Objects](#)

**INFO FOR USERS**

- > [Frequently Asked Questions](#)

**ABOUT THIS PROJECT**

- > [Mission, scope, and contact info](#)

**OTHER LEARNING OBJECT REPOSITORIES FOR LIBRARIANS**

- > [ANTS | CORIL | CLIP | PRIMO](#)
- > *Coming soon: search all these repositories at the same time!*

**OTHER LIBRARY-RELATED OPEN REPOSITORIES**

- > [E-LIS](#)

Site meter:  
309  
hits since January 7, 2008.

**Browse/Search (open to all) | Contribute (requires account)**

Search

Home → Browse by Discipline → Library and Information Literacy

Library and Information Literacy

Search within these results

Showing 1 to 10 of 61

First Prev | 1 2 3 4 5 6 7 | Next Last

10 per page | Sort by Rank

**Research Skills Exercise - Literary Criticism** (ms word)  
Exercise for students during an orientation designed for Literary Criticism  
Learning Resource Type: Exercise  
Technical Format: application/msword  
Date 15-Nov-2007  
Version 1  
Status live  
Licenses (2)  
[View more details...](#)

**Copyright Quick Guide** (ms word)  
Copyright Information  
Learning Resource Type: Leamer Tool  
Technical Format: application/msword  
Date 15-Nov-2007  
Version 1  
Status live  
Licenses (2)  
[View more details...](#)

**Research Skills Exercise - Geography** (ms word)  
Exercise for students during an orientation for students of a Geography class  
Learning Resource Type: Exercise  
Technical Format: application/msword  
Date 15-Nov-2007  
Version 1  
Status live  
Licenses (3)  
[View more details...](#)

**Quick Guide CPI** (pdf document)

**LINK NEWS**

- > [2008/02/19 - Contest Update: Prize Winners!](#)
- > [2007/9/26 - Learning Object Uploading Contest: Share Your Learning Objects! Win Prizes!](#)

**RECENT UPLOADS (RSS)**

- > [Copyright Quick Guide](#)
- > [ART of Analysis](#)
- > [Locating Primary Sources in History](#)
- > [Chart: Scholarly Publications](#)
- > [Evaluating Web Sites](#)
- > [Research Tips](#)
- > [Information Literacy pp slides](#)
- > [Plagiarism](#)
- > [Library and Information Research](#)
- > [Community Social Service Worker Orientation](#)

**MOST POPULAR DOWNLOADS**

- > Coming soon!

Done

# Downloading from LINK

## Evaluating Web Resources - WebCT Tutorial

**Description:** An interactive tutorial with self tests and 2 quizzes. Total completion time:40 minutes. Topics: types of publications, their strengths and quality control mechanisms; Web misconceptions; thinking critically about authoritativeness, purpose, currency, accuracy, audience. Created with WebCT software.

**Authors:** [Judy Growe](#), [Joyce Wong](#), [Liza Hutchison](#)

### View

- [this resource](#)

### Download

- [this resource](#)

### Additional Information:

Resource Type: Tutorial  
Typical Time to use resource: < 1 hour  
Technical Format: application/zip  
Other Platform Requirements: WebCT CE 4

### Find Related Resources

- [More from Library and Information Literacy](#)

### Keywords

Web Internet publishing  
publication types Web misconceptions  
evaluating critical thinking  
WebCT(software)

This resource is available under a  
BC COMMONS LICENSE (Version 1.2)



Learn more about the conditions of use  
granted by this license

### Contributing Institutions



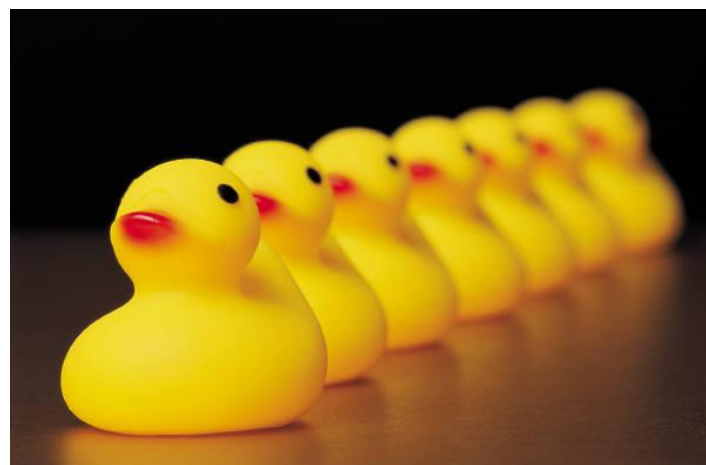
# LINK as a Community

- built on the existing ALPS community
- the potential community of users includes every BC post-secondary librarian, and wider afield
- small volunteer committee of leading agitators
- who can use LINK?



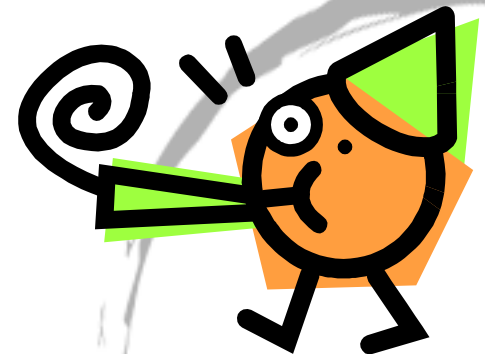
# LINK as a Technology

- glomming together of several technologies
  - SOL\*R repository
  - Web portal on BC ELN server
  - Blog feeds
  - Wiki for collaboration
  - Web 2.0-ey



# Secrets of LINK's success

- built on an existing community
- creative promotional “campaigns” to encourage contribution and use
- pulling together many technologies



# Challenges

- re-inventing the wheel is “faster”
- perfectionism
- longer term: agitator fatigue



# Let a thousand repositories bloom

Why LINK is different than other repositories:

1. Focus
2. Existing community
3. Unique features of  
SOL\*R
4. Harvesting



# Acronym Quiz

- ALPS
- ANTS
- APA
- BCLA
- CC
- CORIL
- IMS

- LINK
- LMS
- LO
- OAI
- RSS
- SOLR



# *Thanks! Questions?*

To contact Gordon: [gordonc@eln.bc.ca](mailto:gordonc@eln.bc.ca)

To get involved with LINK, contact Patti Romanko:  
[romankop@douglas.bc.ca](mailto:romankop@douglas.bc.ca)

Slides will be available in E-LIS.

